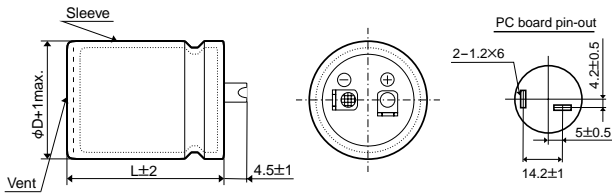


AVAILABLE TERMINALS FOR SNAP-IN TYPE [mm]

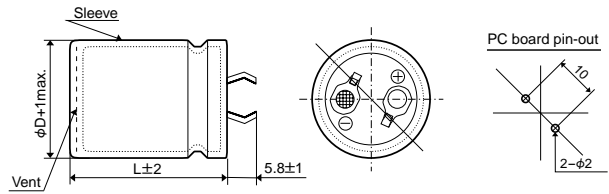
D=φ30 to φ40mm

Type : LISN



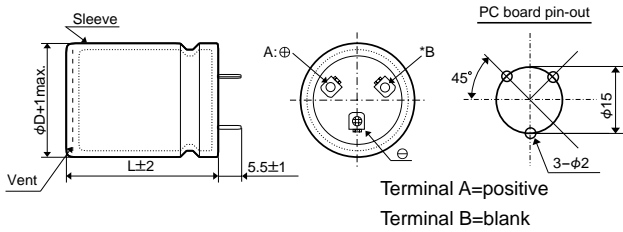
D=φ22 to φ35mm

Type : VNSN



D=φ35 & φ40mm

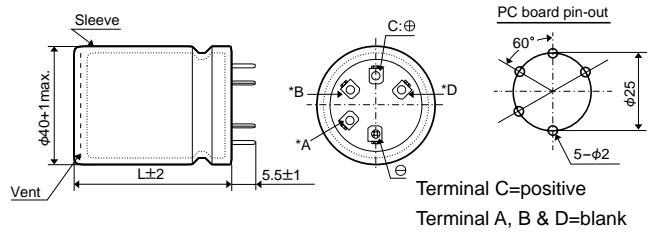
Type : VRSS



Terminal A=positive  
Terminal B=blank

D=φ40mm

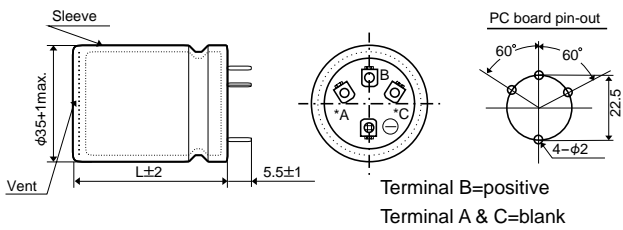
Type : VRST



Terminal C=positive  
Terminal A, B & D=blank

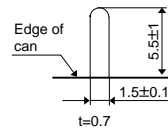
D=φ35 & φ40mm

Type : VRSD



Terminal B=positive  
Terminal A & C=blank

VR pin Dimensions



CAUTION

\* Use the blank terminals for mechanical support only.  
The blank terminals must not be connected to any copper trace on PC board.  
Be sure to electrically isolate from the negative and the positive terminals.

D=φ20×30 to φ50 ∅ mm, φ22×30 to φ50 ∅ mm

Type : LCSN

