

**GENERAL TECHNICAL CHARACTERISTICS**

Reference standards : IEC 61071 60068  
 Dielectric : Polypropylene film  
 Construction : Metallized film  
 Coating : Aluminum case. Dry construction  
 Leads: Threaded bolt M8 / Threaded insert M6

**ELECTRICAL CHARACTERISTICS**

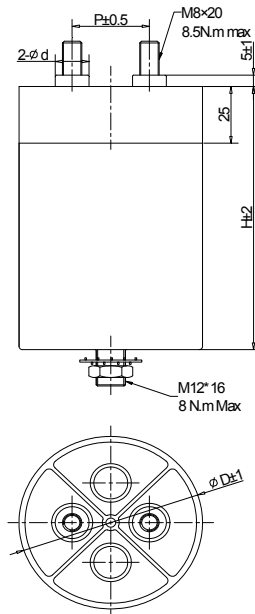
Operating temperature range : - 40 to + 85 °C (Hotspot temperature)  
 Capacitance : 6.8 to 820µF  
 Rated Voltage : 300 to 1400VAC  
 Tolerance : ± 5% , ± 10%  
 Dissipation factor:  $\leq 2 \times 10^{-3}$  Measured at 100Hz and 20±5° C  
 Life expectancy : 30,000 hours at Urms and 70 °C (Hotspot temperature)

**TEST METHODS AND PERFORMANCES**

Dielectric strength: 1.5Urms (AC) applied for 10s at 20±5° C  
 Test voltage terminal to case : 3KVAC/50Hz for 60s  
 Insulation resistance :  $\geq 10000$  s, after 1 minute of electrification at 100VDC (20±5° C)

**ORDERING CODE**

Please refer to Page 10, item J



<b>D=76 , 86mm</b>	<b>D=116mm</b>	<b>D=136mm</b>
d=14mm	d=14mm	d=16mm
P=32mm	P=50mm	P=50mm

**Electrical specifications, ordering codes**

Ordering Code	Cap (µF)	D (mm)	H (mm)	P (mm)	I <sub>rms</sub> @45° C @10kHz (A)	ESR@1.0kHz (mΩ)	RTH (k/w)	Weight (kg)
<b>Urms 300VAC Upeak 425V</b>								
SRP-300-82-MS	82	76	70	32	30	2.5	5.2	0.39
SRP-300-100-MS	100	86	70	32	36	2.1	4.4	0.50
SRP-300-150-MS	150	76	125	32	45	1.5	4.0	0.75
SRP-300-220-MS	220	86	125	32	56	1.1	3.4	0.95
SRP-300-270-MS	270	86	145	32	54	1.3	3.2	1.8
SRP-300-330-MS	330	86	180	32	71	0.9	2.8	1.40
SRP-300-470-MS	470	116	150	50	80	0.9	2.1	2.1
SRP-300-630-MS	630	116	185	50	100	0.6	1.9	2.4
SRP-300-820-MS	820	136	185	50	100	0.5	1.6	3.4
<b>Urms 450VAC Upeak 640V</b>								
SRP-450-37-MS	37	76	70	32	25	3.7	5.2	0.39
SRP-450-47-MS	47	86	70	32	31	2.9	4.4	0.50
SRP-450-56-MS	56	76	95	32	22	5.6	4.6	0.65
SRP-450-68-MS	68	76	125	32	38	2.1	4.0	0.75
SRP-450-100-MS	100	86	125	32	48	1.5	3.4	0.95
SRP-450-125-MS	125	86	145	32	46	1.8	3.2	1.1
SRP-450-145-MS	145	86	175	32	43	2.3	2.9	1.3
SRP-450-180-MS	180	116	130	50	74	1.0	2.3	1.7
SRP-450-270-MS	270	116	180	50	67	1.4	2.0	2.4
SRP-450-330-MS	330	116	215	50	89	0.9	1.8	2.7
SRP-450-390-MS	390	136	185	50	100	0.6	1.6	3.4
<b>Urms 550VAC Upeak 778V</b>								
SRP-550-18-MS	18	76	70	32	30	2.8	5.2	0.39
SRP-550-22-MS	22	76	80	32	29	3.4	4.9	0.55
SRP-550-27-MS	27	76	95	32	26	4.4	4.6	0.65
SRP-550-33-MS	33	76	125	32	45	1.7	4.0	0.75
SRP-550-39-MS	39	76	145	32	42	2.0	3.7	0.95

## Electrical specifications, ordering codes

Ordering Code	Cap ( $\mu$ F)	D (mm)	H (mm)	P (mm)	I <sub>rms</sub> @45°C @10kHz (A)	ESR@1.0kHz (m $\Omega$ )	RTH (k/w)	Weight (kg)
<b>Urms 550VAC Upeak 778V</b>								
SRP-550-47-MS	47	86	125	32	61	1.1	3.4	0.95
SRP-550-56-MS	56	86	145	32	57	1.3	3.2	1.15
SRP-550-68-MS	68	86	175	32	53	1.7	2.9	1.35
SRP-550-82-MS	82	86	210	32	73	1.0	2.6	1.6
SRP-550-110-MS	110	116	150	50	88	0.8	2.1	1.7
SRP-550-120-MS	120	136	130	50	97	0.6	1.9	2.5
SRP-550-150-MS	150	116	180	50	86	0.9	2.0	2.6
SRP-550-175-MS	175	116	215	50	99	0.6	1.8	2.7
SRP-550-210-MS	210	116	230	50	82	1.2	1.7	3.0
SRP-550-300-MS	300	136	260	50	100	0.6	1.3	4.6
<b>Urms850VAC Upeak 1200V</b>								
SRP-850-10-MS	10	86	80	32	30	3.7	4.2	0.44
SRP-850-15-MS	15	76	145	32	49	2.5	3.2	0.95
SRP-850-22-MS	22	86	145	32	48	1.8	3.2	1.1
SRP-850-27-MS	27	86	175	32	44	2.4	2.9	1.33
SRP-850-34-MS	34	116	130	50	79	0.9	2.3	1.77
SRP-850-39-MS	39	116	150	50	74	1.2	2.1	2.1
SRP-850-50-MS	50	116	180	50	69	1.4	2.0	2.4
SRP-850-56-MS	56	136	150	50	93	0.9	1.7	2.6
SRP-850-68-MS	68	136	180	50	86	1.1	1.6	3.3
SRP-850-82-MS	82	136	215	50	96	0.7	1.5	3.7
SRP-850-100-MS	100	136	230	50	80	1.4	1.4	4.6
<b>Urms 1400VAC Upeak1980V</b>								
SRP-1400-6.8-MS	6.8	76	125	32	24	6.0	4.0	0.75
SRP-1400-8.2-MS	8.2	76	145	32	22	7.3	3.7	0.95
SRP-1400-11-MS	11	76	175	32	21	8.8	3.3	1.1
SRP-1400-16MS	16	116	130	50	47	2.7	2.3	1.7
SRP-1400-20-MS	20	116	150	50	44	3.2	2.1	2.1
SRP-1400-27-MS	27	116	180	50	43	3.8	2.0	2.4
SRP-1400-37-MS	37	136	180	50	51	2.8	1.6	3.3