

INCH-POUND

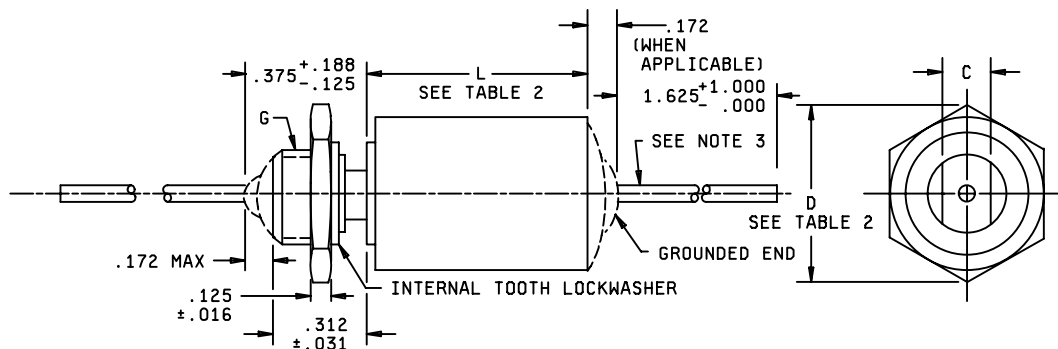
MIL-PRF-19978/15A  
w/Amendment 1  
11 March 2004  
SUPERSEDING  
MIL-PRF-19978/15A  
27 May 1999

PERFORMANCE SPECIFICATION SHEET

CAPACITORS, FIXED, PLASTIC DIELECTRIC, AXIAL-WIRE TERMINAL,  
THREADED-STUD RETAINER, TUBULAR (UNINSULATED)  
(HERMETICALLY SEALED IN METAL CASES),  
ESTABLISHED RELIABILITY, STYLE CQR33

This specification is approved for use by all Departments  
and Agencies of the Department of Defense.

The requirements for acquiring the product described herein  
shall consist of this specification sheet and MIL-PRF-19978.



Inches	mm	Inches	mm	Inches	mm
.001	.03	.125	3.18	.437	11.10
.004	.10	.172	4.37	.562	14.27
.005	.13	.188	4.78	.670	17.02
.016	.41	.250	6.35	.750	19.05
.031	.79	.312	7.92	1.000	25.40
.032	.81	.375	9.53	1.625	41.28

Case dimension D	C $\pm$ .005	G
.562 or less	.250	5/16-24UNF-2A
.670	.375	7/16-28UNEF-2A
.750 and up	.437	1/2-28UNEF-2A

NOTES:

1. Dimensions are in inches.
2. Metric equivalents are given for general information only.
3. Leads shall be of tinned solidwire,  $.032 + .004, -.001$  (No. 20 AWG).
4. Mounting nuts and lockwashers shall be supplied.

FIGURE 1. Style CQR33 capacitors.

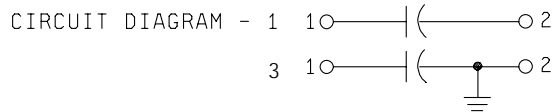
REQUIREMENTS:

Design and construction:

Dimensions and configuration: See figure 1 and table II.

Case material: Nonmagnetic (screwneck and end seal may be of magnetic material).

Terminals: Axial-wire lead (see figure 1).



Rated voltage: See table II.

Rated temperature: -65° to +85°C.

Capacitance (cap.) (nom): See table II.

Capacitance tolerance: See table II.

Dissipation factor (DF) (max): 0.6 percent.

Failure rate level: In accordance with MIL-PRF-19978.

Reliability: In accordance with MIL-PRF-19978.

Burn-in: In accordance with MIL-PRF-19978.

Radiographic inspection: In accordance with MIL-PRF-19978.

Seal: Method 112 of MIL-STD-202, test condition letter A.

Barometric pressure: In accordance with MIL-PRF-19978.

Test points:

Circuit diagram 1: Between terminals and case.

Circuit diagram 3: Between ungrounded terminal and case.

Insulation resistance (IR):

Terminal to terminal: See table I.

Vibration, high frequency: Method 204 of MIL-STD-202, test condition B, with the following exception:

Direction and duration of motion: 4 hours in each of two mutually perpendicular directions (total of 8 hours), one parallel and the other perpendicular to the cylindrical axis.

Salt spray: In accordance with MIL-PRF-19978.

Solderability: In accordance with MIL-PRF-19978.

MIL-PRF-19978/15A  
w/Amendment 1

TABLE I. Terminal-to-terminal insulation resistance.

Capacitance rating	Minimum insulation resistance
<u>Characteristic M</u>	<u>At 25°C</u>
0 to 0.68 microfarad	100,000 megohms
Greater than 0.68 microfarad	68,000 megohm-microfarads <u>1/</u>
	<u>At 85°C</u>
0 to 0.2 microfarad	25,000 megohms
Greater than 0.2 microfarad	5,000 megohm-microfarads <u>1/</u>

1/ Product obtained by multiplying the capacitance in microfarads by the insulation resistance in megohms.

TABLE II. Styles CQR33 capacitors.

PIN <u>1/</u>	DC voltage rating	Capacitance rating	Capacitance tolerance	Failure rate level	Case dimensions			
					Circuit 1		Circuit 3	
					L ±.031	D +.015, -.005	L ±.031	D +.015, -.005
	<u>Volts</u>	<u>μF</u>			<u>Inches</u>	<u>Inches</u>	<u>Inches</u>	<u>Inches</u>
CQR33A-MZ155-3-	30	1.5	G, J, K	M, P, R, S	1.625	.562	1.531	.562
CQR33A-MZ225-3-	30	2.2	G, J, K	M, P, R, S	1.875	.670	1.781	.670
CQR33A-MZ335-3-	30	3.3	G, J, K	M, P, R, S	1.875	.750	1.781	.750
CQR33A-MZ475-3-	30	4.7	G, J, K	M, P, R, S	2.625	.750	2.531	.750
CQR33A-MZ685-3-	30	6.8	G, J, K	M, P, R, S	2.125	1.000	2.031	1.000
CQR33A-MZ106-3-	30	10.0	G, J, K	M, P, R, S	2.375	1.000	2.281	1.000
CQR33A-MA102-3-	50	.0010	G, J, K	M, P, R, S	.594	.400	.562	.400
CQR33A-MA122-3-	50	.0012	G, J, K	M, P, R, S	.594	.400	.562	.400
CQR33A-MA152-3-	50	.0015	G, J, K	M, P, R, S	.594	.400	.562	.400
CQR33A-MA182-3-	50	.0018	G, J, K	M, P, R, S	.594	.400	.562	.400
CQR33A-MA222-3-	50	.0022	G, J, K	M, P, R, S	.594	.400	.562	.400
CQR33A-MA272-3-	50	.0027	G, J, K	M, P, R, S	.594	.400	.562	.400
CQR33A-MA332-3-	50	.0033	G, J, K	M, P, R, S	.594	.400	.562	.400
CQR33A-MA392-3-	50	.0039	G, J, K	M, P, R, S	.594	.400	.562	.400
CQR33A-MA472-3-	50	.0047	G, J, K	M, P, R, S	.594	.400	.562	.400
CQR33A-MA562-3-	50	.0056	G, J, K	M, P, R, S	.594	.400	.562	.400
CQR33A-MA682-3-	50	.0068	G, J, K	M, P, R, S	.594	.400	.562	.400
CQR33A-MA822-3-	50	.0082	G, J, K	M, P, R, S	.594	.400	.562	.400
CQR33A-MA103-3-	50	.010	G, J, K	M, P, R, S	.594	.400	.562	.400
CQR33A-MA123-3-	50	.012	G, J, K	M, P, R, S	.594	.400	.562	.400
CQR33A-MA153-3-	50	.015	G, J, K	M, P, R, S	.594	.400	.562	.400
CQR33A-MA183-3-	50	.018	G, J, K	M, P, R, S	.594	.400	.562	.400
CQR33A-MA223-3-	50	.022	G, J, K	M, P, R, S	.594	.400	.562	.400
CQR33A-MA273-3-	50	.027	G, J, K	M, P, R, S	.594	.400	.562	.400
CQR33A-MA333-3-	50	.033	G, J, K	M, P, R, S	.594	.400	.562	.400
CQR33A-MA393-3-	50	.039	G, J, K	M, P, R, S	.594	.400	.562	.400
CQR33A-MA473-3-	50	.047	G, J, K	M, P, R, S	.594	.400	.562	.400
CQR33A-MA563-3-	50	.056	G, J, K	M, P, R, S	.594	.400	.562	.400
CQR33A-MA683-3-	50	.068	G, J, K	M, P, R, S	.594	.400	.562	.400
CQR33A-MA124-3-	50	.12	G, J, K	M, P, R, S	.875	.400	.781	.400
CQR33A-MA154-3-	50	.15	G, J, K	M, P, R, S	.875	.400	.781	.400
CQR33A-MA184-3-	50	.18	G, J, K	M, P, R, S	.875	.400	.781	.400
CQR33A-MA224-3-	50	.22	G, J, K	M, P, R, S	.875	.400	.781	.400

See footnote at end of table.

MIL-PRF-19978/15A  
w/Amendment 1

TABLE II. Styles CQR33 capacitors - Continued.

PIN 1/	DC voltage rating	Capacitance rating	Capacitance tolerance	Failure rate level	Case dimensions			
					Circuit 1		Circuit 3	
					L ±.031	D +.015, -.005	L ±.031	D +.015, -.005
	<u>Volts</u>	<u>μF</u>			<u>Inches</u>	<u>Inches</u>	<u>Inches</u>	<u>Inches</u>
CQR33A-MA274-3-	50	.27	G, J, K	M, P, R, S	.875	.400	.781	.400
CQR33A-MA334-3-	50	.33	G, J, K	M, P, R, S	1.000	.400	.906	.400
CQR33A-MA394-3-	50	.39	G, J, K	M, P, R, S	1.125	.400	1.031	.400
CQR33A-MA474-3-	50	.47	G, J, K	M, P, R, S	1.125	.400	1.031	.400
CQR33A-MA564-3-	50	.56	G, J, K	M, P, R, S	1.375	.400	1.281	.400
CQR33A-MA684-3-	50	.68	G, J, K	M, P, R, S	1.375	.400	1.281	.400
CQR33A-MA824-3-	50	.82	G, J, K	M, P, R, S	1.125	.562	1.031	.562
CQR33A-MA105-3-	50	1.0	G, J, K	M, P, R, S	1.125	.562	1.031	.562
CQR33A-MA125-3-	50	1.2	G, J, K	M, P, R, S	1.375	.562	1.281	.562
CQR33A-MB125-3-	100	1.2	G, J, K	M, P, R, S	1.625	.670	1.531	.670
CQR33A-MB155-3-	100	1.5	G, J, K	M, P, R, S	1.625	.670	1.531	.670
CQR33A-MB185-3-	100	1.8	G, J, K	M, P, R, S	1.625	.670	1.531	.670
CQR33A-MB225-3-	100	2.2	G, J, K	M, P, R, S	1.875	.750	1.781	.750
CQR33A-MB275-3-	100	2.7	G, J, K	M, P, R, S	2.125	.750	2.031	.750
CQR33A-MB335-3-	100	3.3	G, J, K	M, P, R, S	2.375	.750	2.281	.750
CQR33A-MB395-3-	100	3.9	G, J, K	M, P, R, S	1.875	1.000	1.781	1.000
CQR33A-MB475-3-	100	4.7	G, J, K	M, P, R, S	2.125	1.000	2.031	1.000
CQR33A-MB565-3-	100	5.6	G, J, K	M, P, R, S	2.375	1.000	2.281	1.000
CQR33A-MB685-3-	100	6.8	G, J, K	M, P, R, S	2.625	1.000	2.531	1.000
CQR33A-MC102-3-	200	.0010	G, J, K	M, P, R, S	.750	.400	.656	.400
CQR33A-MC122-3-	200	.0012	G, J, K	M, P, R, S	.750	.400	.656	.400
CQR33A-MC152-3-	200	.0015	G, J, K	M, P, R, S	.750	.400	.656	.400
CQR33A-MC182-3-	200	.0018	G, J, K	M, P, R, S	.750	.400	.656	.400
CQR33A-MC222-3-	200	.0022	G, J, K	M, P, R, S	.750	.400	.656	.400
CQR33A-MC272-3-	200	.0027	G, J, K	M, P, R, S	.750	.400	.656	.400
CQR33A-MC332-3-	200	.0033	G, J, K	M, P, R, S	.750	.400	.656	.400
CQR33A-MC392-3-	200	.0039	G, J, K	M, P, R, S	.750	.400	.656	.400
CQR33A-MC472-3-	200	.0047	G, J, K	M, P, R, S	.750	.400	.656	.400
CQR33A-MC562-3-	200	.0056	G, J, K	M, P, R, S	.750	.400	.656	.400
CQR33A-MC682-3-	200	.0068	G, J, K	M, P, R, S	.750	.400	.656	.400
CQR33A-MC822-3-	200	.0082	G, J, K	M, P, R, S	.750	.400	.656	.400
CQR33A-MC103-3-	200	.010	G, J, K	M, P, R, S	.750	.400	.656	.400
CQR33A-MC123-3-	200	.012	G, J, K	M, P, R, S	.719	.400	.625	.400
CQR33A-MC153-3-	200	.015	G, J, K	M, P, R, S	.719	.400	.625	.400
CQR33A-MC183-3-	200	.018	G, J, K	M, P, R, S	.719	.400	.625	.400
CQR33A-MC223-3-	200	.022	G, J, K	M, P, R, S	.719	.400	.625	.400
CQR33A-MC273-3-	200	.027	G, J, K	M, P, R, S	.719	.400	.625	.400
CQR33A-MC333-3-	200	.033	G, J, K	M, P, R, S	.719	.400	.625	.400
CQR33A-MC393-3-	200	.039	G, J, K	M, P, R, S	.719	.400	.625	.400
CQR33A-MC473-3-	200	.047	G, J, K	M, P, R, S	.719	.400	.625	.400
CQR33A-MC563-3-	200	.056	G, J, K	M, P, R, S	.844	.400	.750	.400
CQR33A-MC683-3-	200	.068	G, J, K	M, P, R, S	.844	.400	.750	.400
CQR33A-MC823-3-	200	.082	G, J, K	M, P, R, S	.844	.400	.750	.400
CQR33A-MC104-3-	200	.10	G, J, K	M, P, R, S	.844	.400	.750	.400
CQR33A-MC124-3-	200	.12	G, J, K	M, P, R, S	.812	.400	.719	.400
CQR33A-MC154-3-	200	.15	G, J, K	M, P, R, S	.812	.400	.719	.400
CQR33A-MC184-3-	200	.18	G, J, K	M, P, R, S	1.062	.400	.969	.400
CQR33A-MC224-3-	200	.22	G, J, K	M, P, R, S	1.062	.400	.969	.400

See footnote at end of table.

MIL-PRF-19978/15A  
w/Amendment 1

TABLE II. Styles CQR33 capacitors - Continued.

PIN 1/	DC voltage rating	Capacitance rating	Capacitance tolerance	Failure rate level	Case dimensions			
					Circuit 1		Circuit 3	
					L ±.031	D +.015, -.005	L ±.031	D +.015, -.005
	<u>Volts</u>	<u>μF</u>			<u>Inches</u>	<u>Inches</u>	<u>Inches</u>	<u>Inches</u>
CQR33A-MC274-3-	200	.27	G, J, K	M, P, R, S	1.250	.400	1.156	.400
CQR33A-MC334-3-	200	.33	G, J, K	M, P, R, S	1.250	.400	1.156	.400
CQR33A-MC394-3-	200	.39	G, J, K	M, P, R, S	1.188	.500	1.094	.500
CQR33A-MC474-3-	200	.47	G, J, K	M, P, R, S	1.188	.500	1.094	.500
CQR33A-MC564-3-	200	.56	G, J, K	M, P, R, S	1.375	.562	1.281	.562
CQR33A-MC684-3-	200	.68	G, J, K	M, P, R, S	1.375	.562	1.281	.562
CQR33A-MC824-3-	200	.82	G, J, K	M, P, R, S	1.875	.562	1.781	.562
CQR33A-MC105-3-	200	1.0	G, J, K	M, P, R, S	1.875	.562	1.781	.562
CQR33A-ME102-3-	400	.0010	G, J, K	M, P, R, S	.812	.400	.719	.400
CQR33A-ME122-3-	400	.0012	G, J, K	M, P, R, S	.812	.400	.719	.400
CQR33A-ME152-3-	400	.0015	G, J, K	M, P, R, S	.812	.400	.719	.400
CQR33A-ME182-3-	400	.0018	G, J, K	M, P, R, S	.812	.400	.719	.400
CQR33A-ME222-3-	400	.0022	G, J, K	M, P, R, S	.812	.400	.719	.400
CQR33A-ME272-3-	400	.0027	G, J, K	M, P, R, S	.812	.400	.719	.400
CQR33A-ME332-3-	400	.0033	G, J, K	M, P, R, S	.812	.400	.719	.400
CQR33A-ME392-3-	400	.0039	G, J, K	M, P, R, S	.812	.400	.719	.400
CQR33A-ME472-3-	400	.0047	G, J, K	M, P, R, S	.812	.400	.719	.400
CQR33A-ME562-3-	400	.0056	G, J, K	M, P, R, S	.938	.400	.844	.400
CQR33A-ME682-3-	400	.0068	G, J, K	M, P, R, S	.938	.400	.844	.400
CQR33A-ME822-3-	400	.0082	G, J, K	M, P, R, S	.938	.400	.844	.400
CQR33A-ME103-3-	400	.010	G, J, K	M, P, R, S	.938	.400	.844	.400
CQR33A-ME123-3-	400	.012	G, J, K	M, P, R, S	.938	.400	.844	.400
CQR33A-ME153-3-	400	.015	G, J, K	M, P, R, S	.938	.400	.844	.400
CQR33A-ME183-3-	400	.018	G, J, K	M, P, R, S	1.062	.400	.969	.400
CQR33A-ME223-3-	400	.022	G, J, K	M, P, R, S	1.062	.400	.969	.400
CQR33A-ME273-3-	400	.027	G, J, K	M, P, R, S	.938	.400	.844	.400
CQR33A-ME333-3-	400	.033	G, J, K	M, P, R, S	.938	.400	.844	.400
CQR33A-ME393-3-	400	.039	G, J, K	M, P, R, S	1.062	.400	.969	.400
CQR33A-ME473-3-	400	.047	G, J, K	M, P, R, S	1.062	.400	.969	.400
CQR33A-ME563-3-	400	.056	G, J, K	M, P, R, S	1.250	.400	1.156	.400
CQR33A-ME683-3-	400	.068	G, J, K	M, P, R, S	1.250	.400	1.156	.400
CQR33A-ME823-3-	400	.082	G, J, K	M, P, R, S	1.562	.400	1.469	.400
CQR33A-ME104-3-	400	.10	G, J, K	M, P, R, S	1.562	.400	1.469	.400
CQR33A-ME124-3-	400	.12	G, J, K	M, P, R, S	1.281	.562	1.188	.562
CQR33A-ME154-3-	400	.15	G, J, K	M, P, R, S	1.281	.562	1.188	.562
CQR33A-ME184-3-	400	.18	G, J, K	M, P, R, S	1.531	.562	1.438	.562
CQR33A-ME224-3-	400	.22	G, J, K	M, P, R, S	1.531	.562	1.438	.562
CQR33A-ME274-3-	400	.27	G, J, K	M, P, R, S	1.906	.562	1.812	.562
CQR33A-ME334-3-	400	.33	G, J, K	M, P, R, S	1.906	.562	1.812	.562
CQR33A-ME394-3-	400	.39	G, J, K	M, P, R, S	1.906	.670	1.812	.670
CQR33A-ME474-3-	400	.47	G, J, K	M, P, R, S	1.906	.670	1.812	.670
CQR33A-ME564-3-	400	.56	G, J, K	M, P, R, S	2.156	.750	2.062	.750
CQR33A-ME684-3-	400	.68	G, J, K	M, P, R, S	2.156	.750	2.062	.750
CQR33A-ME824-3-	400	.82	G, J, K	M, P, R, S	2.656	.750	2.562	.750
CQR33A-ME105-3-	400	1.0	G, J, K	M, P, R, S	2.656	.750	2.562	.750
CQR33A-MF102-3-	600	.0010	G, J, K	M, P, R, S	.812	.400	.719	.400
CQR33A-MF122-3-	600	.0012	G, J, K	M, P, R, S	.812	.400	.719	.400
CQR33A-MF152-3-	600	.0015	G, J, K	M, P, R, S	.812	.400	.719	.400

See footnote at end of table.

MIL-PRF-19978/15A  
w/Amendment 1

TABLE II. Styles CQR33 capacitors - Continued.

PIN <sup>1/</sup>	DC voltage rating	Capacitance rating	Capacitance tolerance	Failure rate level	Case dimensions			
					Circuit 1		Circuit 3	
					L ±.031	D +.015, -.005	L ±.031	D +.015, -.005
	<u>Volts</u>	<u>μF</u>			<u>Inches</u>	<u>Inches</u>	<u>Inches</u>	<u>Inches</u>
CQR33A-MF182-3-	600	.0018	G, J, K	M, P, R, S	.812	.400	.719	.400
CQR33A-MF222-3-	600	.0022	G, J, K	M, P, R, S	.812	.400	.719	.400
CQR33A-MF272-3-	600	.0027	G, J, K	M, P, R, S	.812	.400	.719	.400
CQR33A-MF332-3-	600	.0033	G, J, K	M, P, R, S	.938	.400	.844	.400
CQR33A-MF472-3-	600	.0047	G, J, K	M, P, R, S	.938	.400	.844	.400
CQR33A-MF562-3-	600	.0056	G, J, K	M, P, R, S	.938	.400	.844	.400
CQR33A-MF682-3-	600	.0068	G, J, K	M, P, R, S	.938	.400	.844	.400
CQR33A-MF822-3-	600	.0082	G, J, K	M, P, R, S	1.062	.400	.969	.400
CQR33A-MF103-3-	600	.010	G, J, K	M, P, R, S	1.062	.400	.969	.400
CQR33A-MF123-3-	600	.012	G, J, K	M, P, R, S	.938	.400	.844	.400
CQR33A-MF153-3-	600	.015	G, J, K	M, P, R, S	.938	.400	.844	.400
CQR33A-MF183-3-	600	.018	G, J, K	M, P, R, S	1.062	.400	.969	.400
CQR33A-MF223-3-	600	.022	G, J, K	M, P, R, S	1.062	.400	.969	.400
CQR33A-MF273-3-	600	.027	G, J, K	M, P, R, S	1.312	.400	1.219	.400
CQR33A-MF333-3-	600	.033	G, J, K	M, P, R, S	1.312	.400	1.219	.400
CQR33A-MF393-3-	600	.039	G, J, K	M, P, R, S	1.562	.400	1.469	.400
CQR33A-MF473-3-	600	.047	G, J, K	M, P, R, S	1.562	.400	1.469	.400
CQR33A-MF563-3-	600	.056	G, J, K	M, P, R, S	1.250	.562	1.156	.562
CQR33A-MF683-3-	600	.068	G, J, K	M, P, R, S	1.250	.562	1.156	.562
CQR33A-MF823-3-	600	.082	G, J, K	M, P, R, S	1.500	.562	1.406	.562
CQR33A-MF104-3-	600	.10	G, J, K	M, P, R, S	1.500	.562	1.406	.562
CQR33A-MF124-3-	600	.12	G, J, K	M, P, R, S	1.875	.562	1.781	.562
CQR33A-MF154-3-	600	.15	G, J, K	M, P, R, S	1.875	.562	1.781	.562
CQR33A-MF184-3-	600	.18	G, J, K	M, P, R, S	1.875	.670	1.781	.670
CQR33A-MF224-3-	600	.22	G, J, K	M, P, R, S	1.875	.670	1.781	.670
CQR33A-MF274-3-	600	.27	G, J, K	M, P, R, S	2.125	.750	2.031	.750
CQR33A-MF334-3-	600	.33	G, J, K	M, P, R, S	2.125	.750	2.031	.750
CQR33A-MF394-3-	600	.39	G, J, K	M, P, R, S	2.625	.750	2.531	.750
CQR33A-MF474-3-	600	.47	G, J, K	M, P, R, S	2.625	.750	2.531	.750
CQR33A-MF564-3-	600	.56	G, J, K	M, P, R, S	2.125	1.000	2.031	1.000
CQR33A-MF684-3-	600	.68	G, J, K	M, P, R, S	2.125	1.000	2.031	1.000
CQR33A-MG823-3-	1000	.082	G, J, K	M, P, R, S	2.125	.750	2.031	.750
CQR33A-MG104-3-	1000	.10	G, J, K	M, P, R, S	2.125	.750	2.031	.750
CQR33A-MG124-3-	1000	.12	G, J, K	M, P, R, S	1.875	1.000	1.781	1.000
CQR33A-MG154-3-	1000	.15	G, J, K	M, P, R, S	1.875	1.000	1.781	1.000
CQR33A-MG184-3-	1000	.18	G, J, K	M, P, R, S	2.375	1.000	2.281	1.000
CQR33A-MG224-3-	1000	.22	G, J, K	M, P, R, S	2.375	1.000	2.281	1.000

<sup>1/</sup> Part or Identifying Number(PIN) shall include additional symbols to indicate circuit, capacitance tolerance, and failure rate level, as applicable.

Terminal strength: Method 211 of MIL-STD-202, test condition letter D.

Dielectric absorption (not applicable to values of 0.01 μF or less): 0.60 percent, maximum.

MIL-PRF-19978/15A  
w/Amendment 1

TABLE III. Millimeter equivalent of decimal inches.

Inches	mm	Inches	mm	Inches	mm	Inches	mm
0.005	0.13	0.670	17.02	1.250	31.75	1.906	48.41
0.015	0.38	0.719	18.26	1.281	32.54	2.031	51.59
0.031	0.79	0.750	19.05	1.312	33.32	2.062	52.37
0.175	4.45	0.781	19.84	1.375	34.93	2.125	53.98
0.195	4.95	0.938	23.72	1.406	35.71	2.156	54.76
0.235	5.97	0.969	24.61	1.438	36.53	2.281	57.94
0.312	7.92	1.000	25.40	1.469	37.31	2.375	60.33
0.400	10.16	1.031	26.19	1.500	38.10	2.531	64.29
0.468	11.89	1.062	26.97	1.531	38.89	2.562	65.07
0.500	12.70	1.094	27.79	1.562	39.67	2.625	66.68
0.562	14.27	1.125	28.58	1.625	41.28	2.656	67.46
0.594	15.09	1.156	29.36	1.781	45.24		
0.625	15.88	1.188	30.17	1.812	46.02		
0.656	16.66	1.219	30.96	1.875	47.63		

Stability at low and high temperature:

Low temperature:

Test temperature: -65°C +0°C, -5°C.

Capacitance change (max): -7 percent.

High temperature:

Test temperature: +85°C +5°C, -0°C.

Capacitance change (max): +5 percent.

Life:

Capacitance change (max): ±5 percent of initial measured value.

Resistance to soldering heat: In accordance with MIL-PRF-19978.

\* Referenced documents. In addition to MIL-PRF-19978, this document references MIL-STD-202.

Amendment notations: The margins of this specification are marked with asterisks to indicate modifications generated by this amendment. This was done as a convenience only and the Government assumes no liability whatsoever for any inaccuracies in these notations. Bidders and contractors are cautioned to evaluate the requirements of this document based on the entire content irrespective of the marginal notations.

Custodians:  
Army - CR  
Navy - EC  
Air Force - 11

Preparing activity:  
DLA - CC  
  
(Project 5910-2250)

Review activities:  
Navy - MC  
Air Force - 19, 99

\* NOTE: The activities listed above were interested in this document as of the date of this document. Since organizations and responsibilities can change, you should verify the currency of the information above using ASSIST Online database at [www.dodssp.daps.mil](http://www.dodssp.daps.mil).