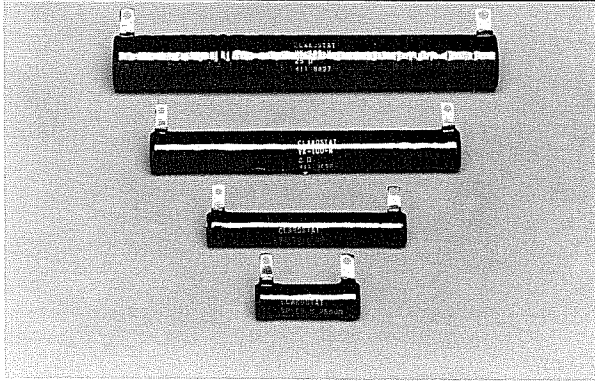


Series VP & VK
25, 50, 100, 160-175, 200-225 Watt
 Fixed Power, Wirewound Resistors



Description

The VP and VK series are for applications requiring high power resistors. These resistors have lug terminals, which are solderable, and they can be bracket mounted. Made in accordance to Mil-R-26 standards, the VP and VK series are suitable for rugged applications.

Features

- Rugged vitreous coating
- High wattage applications
- All-welded construction
- Meets or exceeds MIL-R-26
- Non-inductive winding available

Series VP & VK Material Specifications

Coating

Vitreous enamel

Core

Tubular ceramic

Terminals

Tinned, lug terminals, solderable to MIL-R-26 standards

Weight

VP25K	VP50K	VK100N	VK160W	VK200W
25 watt	50 watt	100 watt	160 watt	200 watt
.816 oz.	1.312 oz.	3.2 oz.	7.12 oz.	11.84 oz.
22.8 gms.	36.7 gms.	89.6 gms.	199.4 gms.	331.5 gms.

Series VP & VK Electrical Specifications

Resistance Tolerance

±5% standard
 Closer tolerances available.

Power Rating

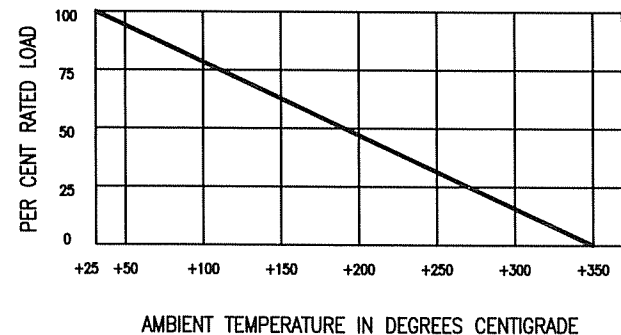
Based on 25°C free air rating

Series	Minimum Wattage	Maximum Wattage
VP25K	25	N/A
VP50K	50	N/A
VK100N	100	N/A
VK160W	160	175
VK200W	200	225

N/A = Not Applicable

Figure 1

Series VP & VK Derating



Overload

10 times rated wattage 5 seconds

Temperature Coefficient

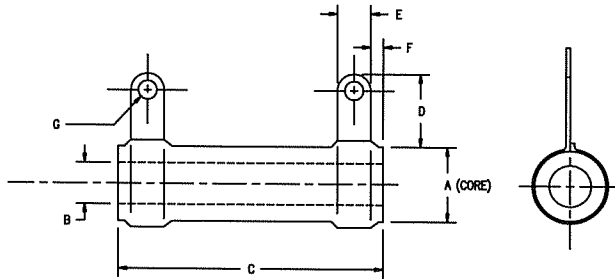
±100 ppm/°C (Closer TC available)

Dielectric Withstanding Voltage

1000 Vac when dual wattage shown:
Lower wattages have max hotspot 275°
Higher wattages have max hotspot 350°

Figure 2

Series VP & VK Dimensions



	A	B	C	D	E	F	G
VP25K							
<i>inches</i>	0.563	0.313	2.00	0.563	0.250	0.094	0.104
<i>mm</i>	14.30	7.950	50.8	14.30	6.350	2.390	2.640
VP50K							
<i>inches</i>	0.563	0.313	4.00	0.563	0.250	0.094	0.144
<i>mm</i>	14.30	7.950	101.6	14.30	6.350	2.390	3.660
VK100N							
<i>inches</i>	0.750	0.500	6.500	0.563	0.250	0.094	0.144
<i>mm</i>	19.05	12.70	165.1	14.30	6.350	2.390	3.660
VK160W							
<i>inches</i>	1.125	.750	8.50	.625	.313	.094	.177
<i>mm</i>	28.58	19.05	215.9	15.88	7.95	2.39	4.50
VK200W							
<i>inches</i>	1.125	.750	10.50	.625	.313	.094	.177
<i>mm</i>	28.58	19.05	266.7	15.88	7.95	2.39	4.50

Dimensional Tolerance: ±.0313 in. (±.795mm)

Series VP & VK Standard Resistance Values

Stock Values

25 WATT		VP25K			FIXED
1	25	500	3K	15K	60K
2	50	750	3.5K	20K	70K
3	75	800	4K	25K	80K
4	100	1K	5K	30K	100K
5	150	1500	6K	35K	
10	200	2K	7.5K	40K	
15	250	2.5K	10K	50K	

50 WATT		VP50K			FIXED
1	75	750	4K	20K	150K
2	100	800	5K	25K	175K
3	150	1K	6K	30K	200K
4	200	1.25K	7.5K	35K	225K
5	250	1.5K	8K	50K	250K
10	300	2K	10K	75K	
25	400	2.5K	12K	100K	
50	500	3K	15K	125K	

100 WATT		VK100N			FIXED
1	25	200	1.5K	7.5K	40K
2	50	250	2K	10K	50K
3	75	300	2.5K	15K	60K
4	100	500	3K	20K	75K
5	125	750	4K	25K	100K
10	150	1K	5K	30K	200K

175 WATT		VK160W			FIXED
1	25	250	3K	20K	75K
2	50	500	5K	25K	100K
3	75	1K	7.5K	30K	
4	100	1.5K	10K	40K	
5	125	2K	12K	50K	
10	150	2.5K	15K	60K	

225 WATT		VK200W			FIXED
1	25	250	2.5K	15K	100K
2	50	500	3K	20K	
3	75	750	5K	25K	
4	100	1K	7.5K	30K	
5	150	1.5K	10K	50K	
10	200	2K	12K	75K	

Note:

Special resistance values available; consult factory.
Mounting brackets sold separately.

Series	Bracket Number
VP25K	K-100
VP50K	K-100
VK100N	N-100
VK160W	W-100
VK200W	W-100

Series VP & VK How To Order

Series/Wattage + Resistance Value = Part Number

Example:

25 watts at 1 ohm = VP25K-1