

**TITLE: SPECIFICATION CONTROL DRAWING**

**PART IDENTIFIER:** 5325

**DESCRIPTION:** HIGH POWER LOAD, BERYLLIA

**ASSEMBLY DWG:** 1700134

**1.0 SPECIFICATIONS:**

**1.1 ELECTRICAL:**

- 1.1.1 RESISTANCE VALUE: 50Ω NOMINAL.
- 1.1.2 INPUT POWER: (@ 100°C HEAT SINK, DERATED LINEARLY TO ZERO POWER AT 150°C):
  - 1.1.2.1 AVERAGE: 25 WATTS.
  - 1.1.2.2 PEAK: 250 WATTS (BASED ON 100US PULSE WIDTH AND 1% DUTY CYCLE).
- 1.1.3 FREQUENCY RANGE: DC - 2.0 GHZ.
- 1.1.4 VSWR: DC - 1.0 GHZ - 1.10  
1.0 - 2.0 GHZ - 1.15  
2.0 - 3.0 GHZ - 1.30

**1.2 MECHANICAL:**

- 1.2.1 OUTLINE DWG: SEE SHEET 2.

**1.3 ENVIRONMENTAL:**

- 1.3.1 TEMPERATURE RANGE:
  - 1.3.1.1 STORAGE: -65°C TO +150°C.
  - 1.3.1.2 OPERATING: -55°C TO +150°C.

**2.0 UNIT MARKING:** "EMCT 5325"  
LEGIBILITY AND PERMANENCY PER MIL-STD-130

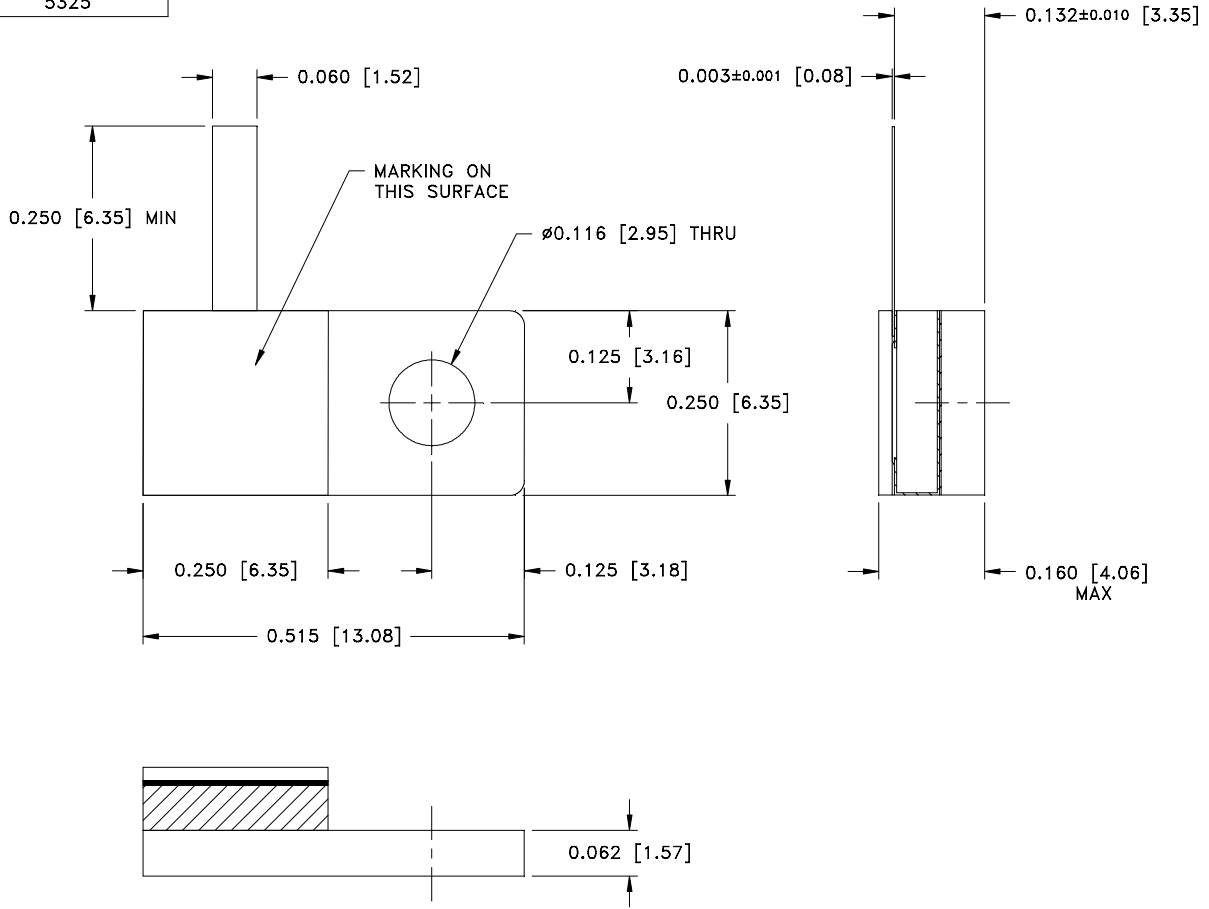
**3.0 QUALITY ASSURANCE:**

- 3.1 PERFORM INSPECTION IN ACCORDANCE WITH QA0006 AND FORM0357 FOR COMMERCIAL GRADE PRODUCT.
- 3.2 TEST DATA REQUIREMENTS:
  - 3.2.1 NO TEST DATA REQUIRED FOR CUSTOMER.
  - 3.2.2 DATA RETENTION – 24 MONTHS.

**4.0 PACKAGING:** STANDARD PACKING PER MC0023.

|                               |  |                          |           |            |  |                |            |           |  |
|-------------------------------|--|--------------------------|-----------|------------|--|----------------|------------|-----------|--|
| <b>ENG</b>                    |  | <b>PUR</b>               |           | <b>MFG</b> |  | <b>PLAN</b>    |            | <b>SM</b> |  |
| <b>CC</b>                     |  |                          |           | <b>QA</b>  |  |                |            |           |  |
| <b>EMC TECHNOLOGY, INC</b>    |  | <b>CAGE CODE # 24602</b> |           |            |  | <b>DWG #</b>   | 1004285000 |           |  |
| <b>1971 OLD CUTHBERT ROAD</b> |  | <b>CHANGE NOTICE</b>     | EN 01-277 |            |  | <b>REV LVL</b> | J          |           |  |
| <b>CHERRY HILL, NJ 08034</b>  |  |                          |           |            |  | <b>SHEET</b>   | 1 OF 2     |           |  |

PART ID REF  
5325



**MECHANICAL SPECIFICATIONS:**

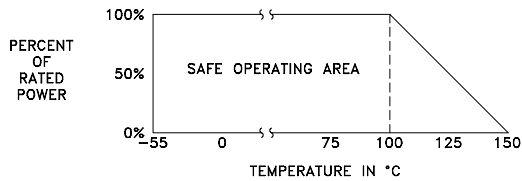
- CHIP:  
MATERIAL - BERYLLIA, ASTM F356.
- TOP PLATE:  
MATERIAL - ALUMINA, MIL-I-10.
- TAB:  
MATERIAL - BRASS, ASTM B36.  
FINISH - GOLD, MIL-G-45204, TYPE II, CLASS 1.
- HEATSINK:  
MATERIAL - COPPER, ASTM B187.  
FINISH - NICKEL, QQ-N-290.

METRIC EQUIVALENTS GIVEN IN [mm]  
FOR REFERENCE INFORMATION ONLY



ALLOW ±0.010 ON TOP PLATE FOR MISALIGNMENT.

**POWER RATING AND DERATING**



EMC TECHNOLOGY INC  
1971 OLD CUTHBERT RD  
CHERRY HILL NJ 08034  
PHONE NO. (856) 429-7800  
FAX NO. (856) 429-1807

UNLESS OTHERWISE SPECIFIED DIMENSIONS ARE IN INCHES TOLERANCES  
FRACT ---  
ANG ---  
XX ---  
XXX ±0.005  
XXXX ---

THESE DRAWINGS AND SPECIFICATIONS ARE THE PROPERTY OF EMC TECHNOLOGY INC AND SHALL NOT BE DUPLICATED OR USED AS BASIS FOR THE MANUFACTURE OR SALE OF PARTS OR DEVICES WITHOUT PERMISSION.

|                    |                            |                            |                 |                            |
|--------------------|----------------------------|----------------------------|-----------------|----------------------------|
| CAGE CODE<br>24602 | SCALE<br>6:1               | DRAWN BY<br>CME 07/09/2001 | CHECKED BY      | APPROVED BY<br>FJV 8/21/01 |
| REV<br>J           | CHANGE NOTICE<br>EN 01-277 | DRAWING NO<br>1004285000   | SHEET<br>2 OF 2 |                            |