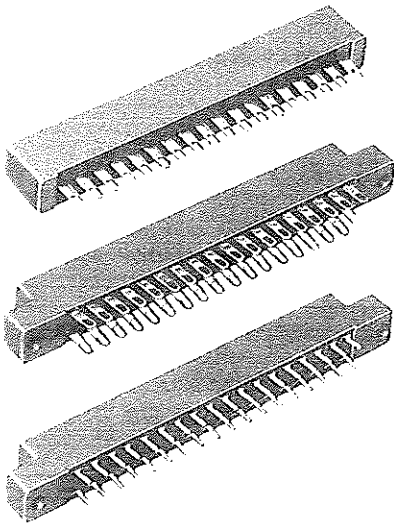


CARDCON* Edge Connectors

.156" (3.962) Center Spacing
for 1/16" (1.588) Boards



New cost effective methods of manufacture, selective plating and assembly permits TRW Cinch to price Cardcon 20% to 50% below most other P.C. Board connectors. Cardcon meets applicable performance requirements of MIL-C-21097.

Insulator: Blue glass-filled polyester—94V-0

Contact style: Semi-bellows—bifurcated
Contact material: Spring brass alloy 260

Contact plating: Gold on contact area and gold flash on tail with copper underplate.

Termination: Solder eyelet terminals; DIP solder terminals with either .200" (5.08 mm)

or .140" (3.56 mm) between row spacing
Mounting: Available with mounting ears and .128" holes or without mounting ears. For other type mounting consult factory.

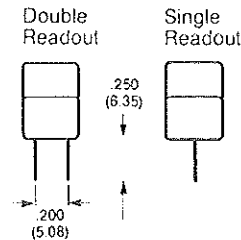
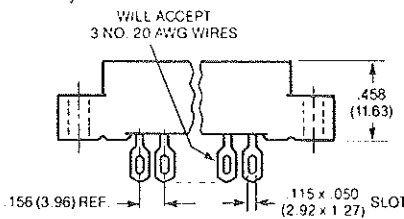
Test voltage: 1800 RMS AC at sea level
Rated current: 5 AMPS.

Polarizing key: Between-contact type (P/N 50-PK-2) or In-contact type (P/N 50-PK-4). Order separately.

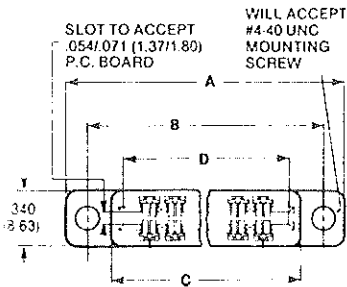
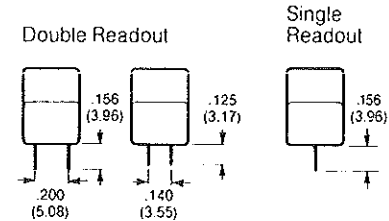
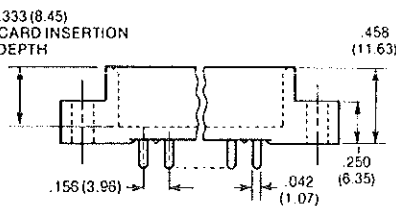
Card guide: Part No. 50-GP-1B. Order separately.

Part is blue to match Cardcon.

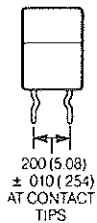
Solder eyelet terminals



DIP solder terminals



Board retention P.C. tails



Contact Positions	A		B		C		D	
	In.	MM	In.	MM	In.	MM	In.	MM
6	1.785	45.33	1.531	38.89	1.239	31.47	1.100	27.94
10	2.410	61.21	2.156	54.76	1.864	47.34	1.724	43.79
12	2.723	69.16	2.469	62.71	2.177	55.29	2.036	51.71
15	3.191	81.05	2.937	74.60	2.645	67.18	2.504	63.60
18	3.660	92.96	3.406	86.51	3.114	79.09	2.972	75.48
22	4.285	108.83	4.031	102.38	3.739	94.97	3.596	91.33
24	4.598	116.79	4.344	110.31	4.052	102.92	3.911	99.33
25	4.754	120.75	4.500	114.30	4.208	106.68	4.067	103.30

*Trademark of TRW, Inc

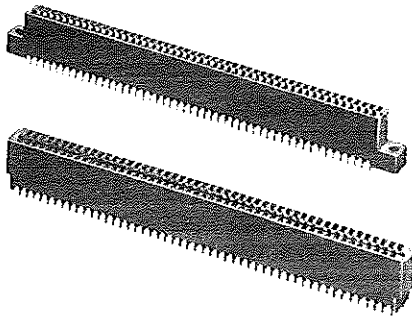
Positions	Distributor Part Numbers											
	Single Readout				Double Readout							
	Solder Eyelet		DIP Solder .156" Long		Solder Eyelet		DIP Solder .125" Long Style 2		DIP Solder .156" Long Style 1			
							.140" Between Rows		.200" Between Rows			
	.128" Mounting Hole	W.O. Mounting Ears	.128" Mounting Hole	W.O. Mounting Ears	.128" Mounting Hole	W.O. Mounting Ears	.128" Mounting Hole	W.O. Mounting Ears	.128" Mounting Hole W.O. Retention Feat.	.128" Mounting Hole With Retention Feat.	W.O. Mounting Ears W.O. Retention Feat.	W.O. Mounting Ears With Retention Feat.
6	50-6SN-7	50-6SN-8	50-6SN-5	50-6SN-6	50-12SN-9	50-12SN-10	50-12SN-2	50-12SN-4	50-12SN-1	50-12SN-1R	50-12SN-3	50-12SN-3R
10	50-10SN-7	50-10SN-8	50-10SN-5	50-10SN-6	50-20SN-9	50-20SN-10	50-20SN-2	50-20SN-4	50-20SN-1	50-20SN-1R	50-20SN-3	50-20SN-3R
12	50-12SN-7	50-12SN-8	50-12SN-5	50-12SN-6	50-24SN-9	50-24SN-10	50-24SN-2	50-24SN-4	50-24SN-1	50-24SN-1R	50-24SN-3	50-24SN-3R
15	50-15SN-7	50-15SN-8	50-15SN-5	50-15SN-6	50-30SN-9	50-30SN-10	50-30SN-2	50-30SN-4	50-30SN-1	50-30SN-1R	50-30SN-3	50-30SN-3R
18	50-18SN-7	50-18SN-8	50-18SN-5	50-18SN-6	50-36SN-9	50-36SN-10	50-36SN-2	50-36SN-4	50-36SN-1	50-36SN-1R	50-36SN-3	50-36SN-3R
22	50-22SN-7	50-22SN-8	50-22SN-5	50-22SN-6	50-44SN-9	50-44SN-10	50-44SN-2	50-44SN-4	50-44SN-1	50-44SN-1R	50-44SN-3	50-44SN-3R
24	50-24SN-7	50-24SN-8	50-24SN-5	50-24SN-6	50-48SN-9	50-48SN-10	50-48SN-2	50-48SN-4	50-48SN-1	50-48SN-1R	50-48SN-3	50-48SN-3R
25	50-25SN-7	50-25SN-8	50-25SN-5	50-25SN-6	50-50SN-9	50-50SN-10	50-50SN-2	50-50SN-4	50-50SN-1	50-50SN-1R	50-50SN-3	50-50SN-3R

The TRW board retention feature holds the connector firmly on the board during the wave soldering process, eliminating the need for

mounting flanges and hardware. Plated-thru holes are not damaged if the connector is removed.

CARDCON* Edge Connectors

.100" (2.54mm) Center Spacing for 1/16" (1.59mm) Boards



TRW Cardcon Edge Connectors are also available with .100 (2.54mm) center spacing. These low cost edge connectors are available in double readout only. The bifurcated semi-bellows contacts make them highly suitable for applications involving vibration or board irregularities. They are available with mounting ears, or with .128" (3.25mm) mounting holes or with 4-40 threaded bushing. They meet applicable performance criteria of MIL-C-21097.

Insulator Material: UL 94V-0 rated glass filled polyester. Color—Blue.

Contact Material/Plating: Contacts are available in alloy 260 spring brass. Standard finish gold over nickel in contacting area. Gold flash on tails copper overall underplate. Contact factory for other contact material and plating options.

Shock: Per MIL-STD-202E method 213B, condition "C."

Temperature Cycling: 5 continuous cycles (-65°C to +125°C) per MIL-STD-202E method 107D, condition "B."

Vibration: Per MIL-STD-202E method 204C, condition "B."

Humidity: Per MIL-STD-202E, method 103, condition "B." 650 at sea level.

Current Rating: 3.0 Amperes.

Contact Resistance at Rated Current: 0.010 Ohms Max.

Insulation Resistance: 1000 Megohms Min.

Polarizing Key: Between-contact type Distributor Part No. 50-PK-2; or In-contact type Distributor Part No. 50-PK-4—Order separately.

Card Guide: Distributor Part No. 50-GP-1B Order separately. Part is blue to match connector.

Double Readout
.156" Long Dip Solder Tails

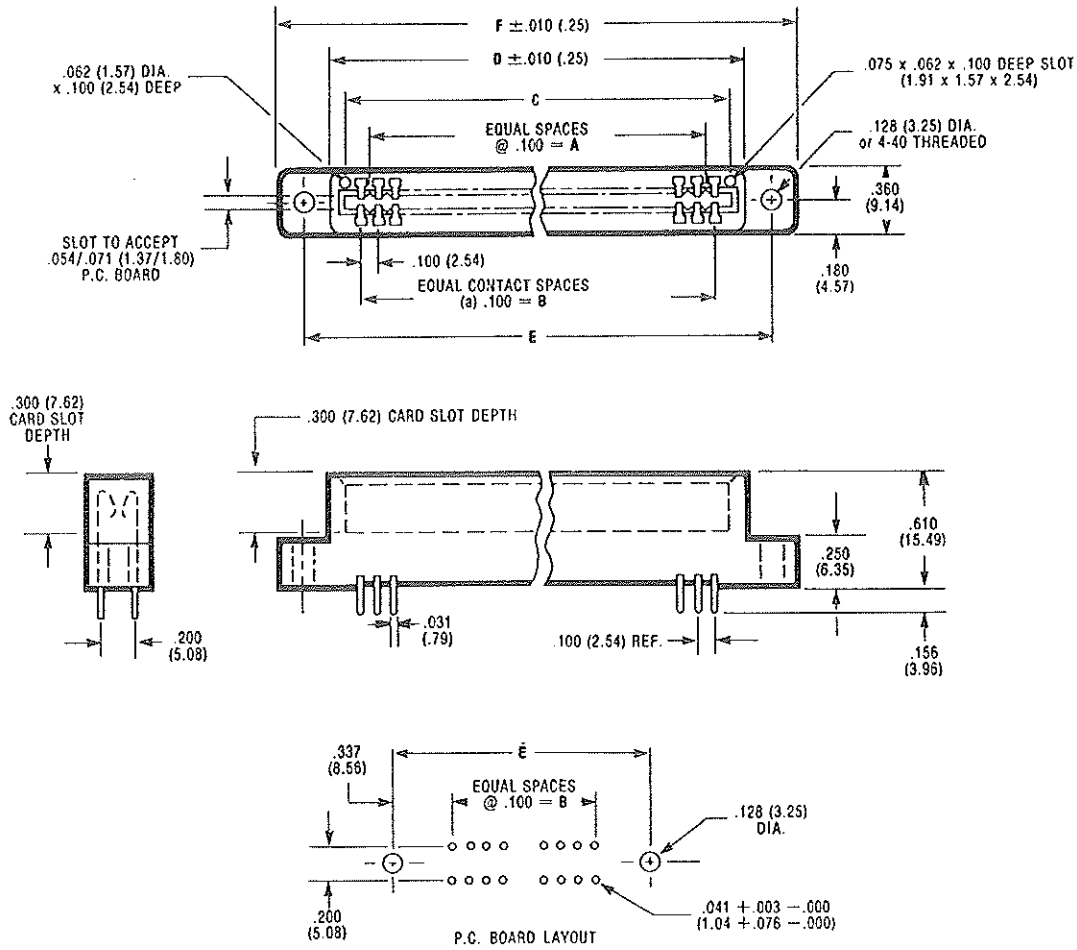
Contact Position	Distributor Part Numbers		
	Without Ears	With Plain Mounting Ears	With Molded in 4-40 Threaded Bushing
12	50-12SN-12	50-12SN-11	50-12SN-13
15	50-15SN-12	50-15SN-11	50-15SN-13
18	50-18SN-12	50-18SN-11	50-18SN-13
20	50-20SN-12	50-20SN-11	50-20SN-13
22	50-22SN-12	50-22SN-11	50-22SN-13
25	50-25SN-12	50-25SN-11	50-25SN-13
28	50-28SN-12	50-28SN-11	50-28SN-13
30	50-30SN-12	50-30SN-11	50-30SN-13
31	50-31SN-12	50-31SN-11	50-31SN-13
36	50-36SN-12	50-36SN-11	50-36SN-13
37	50-37SN-12	50-37SN-11	50-37SN-13
40	50-40SN-12	50-40SN-11	50-40SN-13
43	50-43SN-12	50-43SN-11	50-43SN-13
44	50-44SN-12	50-44SN-11	50-44SN-13
49	50-49SN-12	50-49SN-11	50-49SN-13
50	50-50SN-12	50-50SN-11	50-50SN-13
52	50-52SN-12	50-52SN-11	50-52SN-13
60	50-60SN-12	50-60SN-11	50-60SN-13
70	50-70SN-12	50-70SN-11	50-70SN-13

C
1
1
1
2
2
2
2
3
3
3
3
4
4
4
5
5
6
7

.100 (2.54) Center Spacing for 1/16 (1.588) Boards



Dimensions

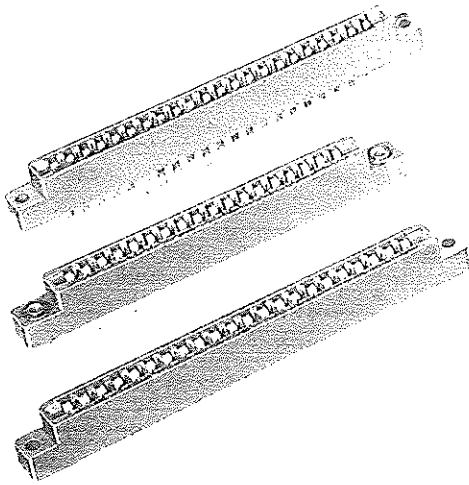


No. of Contacts	A		B		C		D		E		F	
	In.	MM	In.	MM	In.	MM	In.	MM	In.	MM	In.	MM
12/24	1.000	25.40	1.100	27.94	1.300	33.02	1.460	37.08	1.775	45.09	2.035	51.69
15/30	1.300	33.02	1.400	35.56	1.600	40.64	1.760	44.704	2.075	52.71	2.335	59.31
18/36	1.600	40.64	1.700	43.18	1.900	48.26	2.060	52.32	2.375	60.33	2.635	66.93
20/40	1.800	45.72	1.900	48.26	2.100	53.34	2.260	57.40	2.575	65.41	2.835	72.01
22/44	2.000	50.80	2.100	53.34	2.300	58.42	2.460	62.48	2.775	70.49	3.035	77.09
25/50	2.300	58.42	2.400	60.96	2.600	66.04	2.760	70.10	3.075	78.11	3.335	84.71
28/56	2.600	66.04	2.700	68.58	2.900	73.66	3.060	77.72	3.375	85.73	3.635	92.33
30/60	2.800	71.12	2.900	73.66	3.100	78.74	3.260	82.80	3.575	90.81	3.835	97.41
31/62	2.900	73.66	3.000	76.20	3.200	81.28	3.360	85.34	3.675	93.35	3.935	99.95
36/72	3.400	86.36	3.500	88.90	3.700	93.99	3.860	98.04	4.175	106.05	4.434	112.65
37/74	3.500	88.90	3.600	91.44	3.800	96.52	3.960	100.58	4.275	108.59	4.535	115.19
40/80	3.800	96.52	3.900	99.06	4.100	104.14	4.260	108.20	4.575	116.21	4.835	122.81
43/86	4.100	104.14	4.200	106.68	4.400	111.76	4.560	115.82	4.875	123.83	5.135	130.43
44/88	4.200	106.68	4.300	109.22	4.500	114.30	4.660	118.36	4.975	126.37	5.235	132.97
49/98	4.700	119.38	4.800	121.92	5.000	127.00	5.160	131.06	5.475	139.07	5.735	145.67
50/100	4.800	121.92	4.900	124.46	5.100	129.54	5.260	133.60	5.575	141.61	5.835	148.21
52/104	5.000	127.00	5.100	129.54	5.300	134.62	5.460	138.68	5.775	146.68	6.035	153.30
60/120	5.800	147.32	5.900	149.86	6.100	154.94	6.260	159.00	6.575	167.01	6.835	173.61
70/140	6.800	172.72	6.900	175.26	7.100	180.34	7.260	184.40	7.575	192.41	7.835	199.01

TRW Commercial And Military Edge Connectors

.156" (3.962) Center Spacing
For 1/16" (1.588) Boards

Double and Single Readout



Insulator: Glass fiber filled diallyl phthalate per MIL-M-14 Type SGD-F.

Contact style: Bifurcated bellows.

Contact material:

- 1) Commercial type: Phosphor bronze.
- 2) Military type: Beryllium copper.

Contact plating:

- 1) Commercial type: Stripe plated with gold in contact area and gold on tails with copper underplate. No plating on edges.
- 2) Military type: gold over copper.

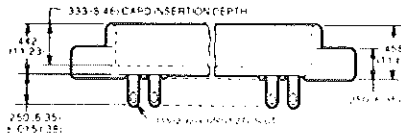
Termination: Solder eyelet terminals with .200" (5.08 mm) between row spacing on double readout. Dip solder tails with either .140" (3.56 mm) or .200" (5.08 mm) between row spacing on double readout.

Test voltage: 1800 volts RMS AC at sea level. Rated current: 5 amps.

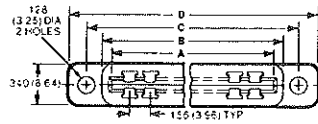
Polarizing keys: Between contact type Part no. 50-PK-2 or in contact type Part no. 50-PK-1. Order separately.

Card guide: Part no. BR-GP-1. Order separately.

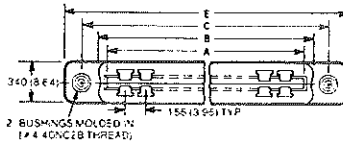
UL recognized



With plain mounting holes



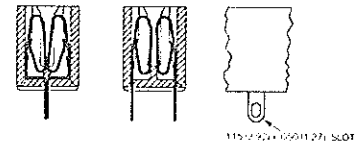
With molded-in bushings (Military)



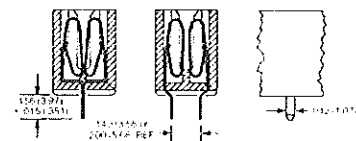
With floating bushings (Military)



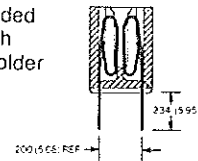
Solder Eyelet



Dip Solder

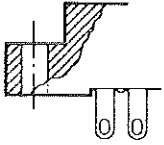


Extended Length Dip Solder

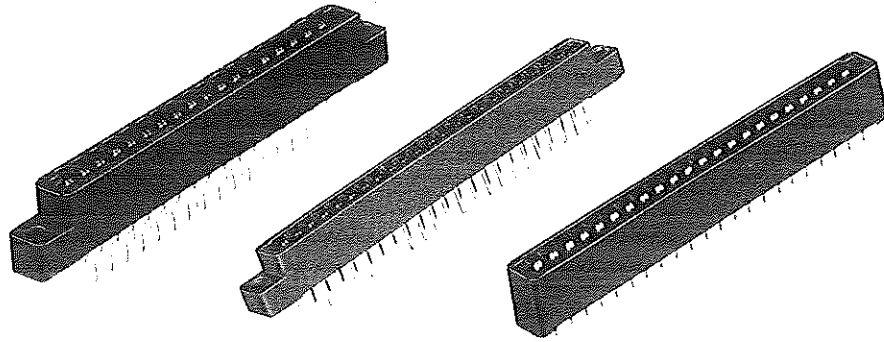


No. of Contact Positions	Dimensions									
	A		B		C		D		E	
	In.	MM	In.	MM	In.	MM	In.	MM	In.	MM
6	1.100	27.94	1.239	31.47	1.531	38.89	1.785	45.34	1.937	49.19
10	1.724	43.79	1.864	47.35	2.156	54.76	2.410	61.21	2.562	65.07
12	2.036	51.71	2.177	55.30	2.469	62.71	2.723	69.16	2.875	73.03
15	2.504	63.60	2.645	67.18	2.937	74.60	3.191	81.05	3.343	84.91
18	2.972	75.49	3.114	79.10	3.406	86.51	3.660	92.96	3.812	96.82
22	3.596	91.34	3.739	94.97	4.031	102.39	4.285	108.84	4.437	112.70
25	4.067	103.30	4.208	106.88	4.500	114.30	4.754	120.75	4.906	124.61

**Commercial
Double and Single Readout**

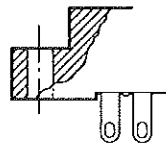


Plain Mounting Hole

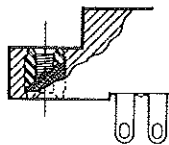


Contact Positions	Distributor Part Numbers							
	Single Readout			Double Readout				
	Solder Eyelet	DIP Solder .156" long	DIP Solder .234" long	Solder Eyelet	DIP Solder .125" long		DIP Solder .156" long	DIP Solder .234" long
					.140" Between Rows		.200" Between Rows	.200" Between Rows
	Mounting Hole	Mounting Hole	Mounting Hole	Mounting Hole	Mounting Hole	W.O. Mounting Ears	Mounting Hole	Mounting Hole
6	50-6A-20	50-6B-10	50-6S-10	50-12A-30	50-12S-30-2	50-12S-30-1	50-12B-10	50-12S-20
10	50-10A-20	50-10B-10	50-10S-10	50-20A-30	50-20S-30-2	50-20S-30-1	50-20B-10	50-20S-20
12	50-12A-20	50-12B-10	50-12S-10	50-24A-30	50-24S-30-2	50-24S-30-1	50-24B-10	50-24S-20
15	50-15A-20	50-15B-10	50-15S-10	50-30A-30	50-30S-30-2	50-30S-30-1	50-30B-10	50-30S-20
18	50-18A-20	50-18B-10	50-18S-10	50-36A-30	50-36S-30-2	50-36S-30-1	50-36B-10	50-36S-20
22	50-22A-20	50-22B-10	50-22S-10	50-44A-30	50-44S-30-2	50-44S-30-1	50-44B-10	50-44S-20
25	50-25A-20	50-25B-10	50-25S-10	50-50A-30	50-50S-30-2	50-50S-30-1	50-50B-10	50-50S-20

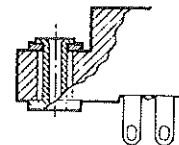
**MIL-C-21097 Military
Double and Single Readout**



Plain Mounting Hole



Molded-in Bushing



Floating Bushing

Military type per MIL-C-21097 with conventional solder terminals

Single Readout

Contact Positions	Plain Mounting Hole		Molded-in Bushing		Floating Bushing	
	Distributor No.	Military No.	Distributor No.	Military No.	Distributor No.	Military No.
6	50-6A-20M-1	M21097/21-001	50-6A-20-MB-1	M21097/21-004	50-6A-20-MFB-1	M21097/21-007
10	50-10A-20M-1	M21097/21-037	50-10A-20-MB-1	M21097/21-040	50-10A-20-MFB-1	M21097/21-043
15	50-15A-20M-1	M21097/21-073	50-15A-20-MB-1	M21097/21-076	50-15A-20-MFB-1	M21097/21-079
18	50-18A-20M-1	M21097/21-109	50-18A-20-MB-1	M21097/21-112	50-18A-20-MFB-1	M21097/21-115
22	50-22A-20M-1	M21097/21-145	50-22A-20-MB-1	M21097/21-148	50-22A-20-MFB-1	M21097/21-151

Double Readout, .200 (5.08 mm) spacing between rows

Contact Positions	Plain Mounting Hole		Molded-in Bushing		Floating Bushing	
	Distributor No.	Military No.	Distributor No.	Military No.	Distributor No.	Military No.
6	50-12A-30M-1	M21097/21-019	50-12A-30-MB-1	M21097/21-022	50-12A-30-MFB-1	M21097/21-025
10	50-20A-30M-1	M21097/21-055	50-20A-30-MB-1	M21097/21-058	50-20A-30-MFB-1	M21097/21-061
15	50-30A-30M-1	M21097/21-091	50-30A-30-MB-1	M21097/21-094	50-30A-30-MFB-1	M21097/21-097
18	50-36A-30M-1	M21097/21-127	50-36A-30-MB-1	M21097/21-130	50-36A-30-MFB-1	M21097/21-133
22	50-44A-30M-1	M21097/21-163	50-44A-30-MB-1	M21097/21-166	50-44A-30-MFB-1	M21097/21-169

Military type per MIL-C-21097 w/dip solder term. Plain mounting hole

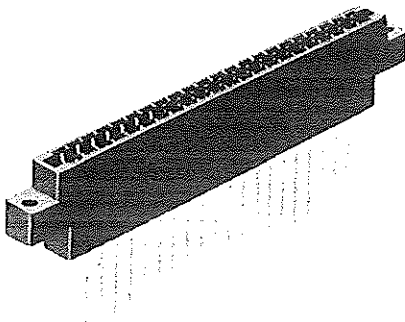
Double readout, .200 (5.08 mm) spacing between rows.

Contact Positions	Distributor No.	Mil. Part No.
6	50-12B-10M-1	M21097/21-028
10	50-20B-10M-1	M21097/21-064
15	50-30B-10M-1	M21097/21-100
18	50-36B-10M-1	M21097/21-136
22	50-44B-10M-1	M21097/21-172

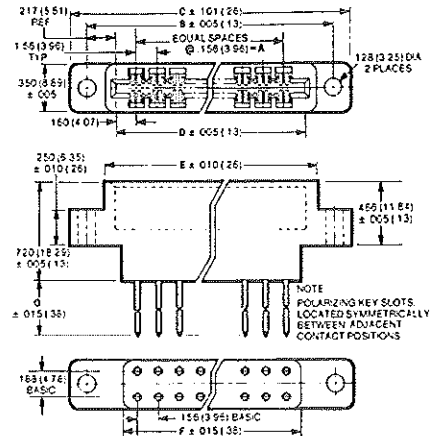
TRW Wire Wrap Edge Connectors

.156" (3.962) Center Spacing
For 1/16" (1.588) Boards

.031" (.787mm) x .062" (1.57mm)
Wire Wrap Tail Double Readout



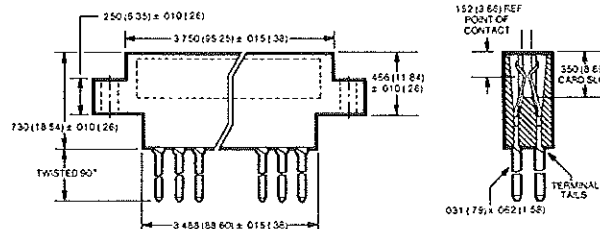
Insulator: General purpose phenolic, black.
Contact style: Bifurcated cantilevered.
Contact material: Copper alloy
Contact plating: Gold over copper in contacting area, and gold on remainder of contact. (22 position connectors have an additional plate of gold over nickel on the contacting area.)
Termination: .031" (.787 mm) x .062" (1.57 mm) wire wrap tail, available with three tail lengths. .188" (4.78 mm) between row spacing. 22 contact position connector also available with terminals twisted 90° below insulator. See 50-44X-10 series below.
Electrical ratings: 990 volts AC RMS at sea level. 3 amps.
Polarizing key: Between contact type. Part no. 50-PK-3 Order separately.
Card guide: Part no. 50-GP-1 Order separately.
UL Recognized File #E19071



Contact Positions	Distributor Part No.	Dimensions													
		A		B		C		D		E		F		G	
		In.	MM	In.	MM	In.	MM	In.	MM	In.	MM	In.	MM	In.	MM
10	50-20E10-1	1.404	35.66	2.158	54.81	2.408	61.16	1.724	43.79	1.878	47.70	1.616	41.05	.550	13.97
10	50-20F10-1	1.404	35.66	2.158	54.81	2.408	61.16	1.724	43.79	1.878	47.70	1.616	41.05	.755	19.18
10	50-20G10-1	1.404	35.66	2.158	54.81	2.408	61.16	1.724	43.79	1.878	47.70	1.616	41.05	1.051	26.70
15	50-30E10-1	2.184	55.47	2.938	74.63	3.188	80.98	2.504	63.60	2.658	67.51	2.396	60.86	.550	13.97
15	50-30F10-1	2.184	55.47	2.938	74.63	3.188	80.98	2.504	63.60	2.658	67.51	2.396	60.86	.755	19.18
15	50-30G10-1	2.184	55.47	2.938	74.63	3.188	80.98	2.504	63.60	2.658	67.51	2.396	60.86	1.051	26.70
18	50-36E10-1	2.652	67.36	3.406	86.51	3.656	92.86	2.972	75.49	3.126	79.40	2.864	72.75	.550	13.97
18	50-36F10-1	2.652	67.36	3.406	86.51	3.656	92.86	2.972	75.49	3.126	79.40	2.864	72.75	.755	19.18
18	50-36G10-1	2.652	67.36	3.406	86.51	3.656	92.86	2.972	75.49	3.126	79.40	2.864	72.75	1.051	26.70
22	50-44E10-1	3.276	83.21	4.030	102.36	4.280	108.71	3.596	91.34	3.750	95.25	3.488	88.60	.550	13.97
22	50-44F10-1	3.276	83.21	4.030	102.36	4.280	108.71	3.596	91.34	3.750	95.25	3.488	88.60	.755	19.18
22	50-44G10-1	3.276	83.21	4.030	102.36	4.280	108.71	3.596	91.34	3.750	95.25	3.488	88.60	1.051	26.70
25	50-50E10-1	3.744	95.10	4.498	114.25	4.748	120.60	4.064	103.23	4.218	107.14	3.956	100.48	.550	13.97
25	50-50F10-1	3.744	95.10	4.498	114.25	4.748	120.60	4.064	103.23	4.218	107.14	3.956	100.48	.755	19.18
25	50-50G10-1	3.744	95.10	4.498	114.25	4.748	120.60	4.064	103.23	4.218	107.14	3.956	100.48	1.051	26.70
30	50-60E10-1	4.524	114.91	5.278	134.06	5.528	140.41	4.844	123.04	4.988	126.70	4.736	120.29	.550	13.97
30	50-60F10-1	4.524	114.91	5.278	134.06	5.528	140.41	4.844	123.04	4.988	126.70	4.736	120.29	.755	19.18
30	50-60G10-1	4.524	114.91	5.278	134.06	5.528	140.41	4.844	123.04	4.988	126.70	4.736	120.29	1.051	26.70

With tail twisted below insulator
50-44X-10 Series
 Copper overall and gold over nickel in contact area. Gold on balance of contact.

Type	Terminal Length		Dist. Part No.
	In.	MM	
E	0.550	13.97	50-44E-10
F	0.755	19.18	50-44F-10
G	1.051	26.70	50-44G-10

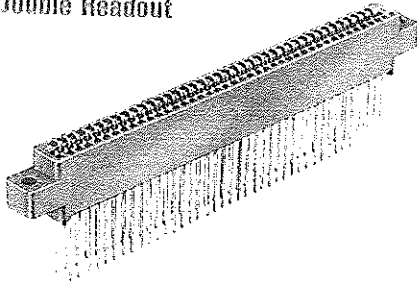


TRW Wire Wrap Solder Tab/Dip Solder Edge Connectors

.100" (2.54) Center Spacing

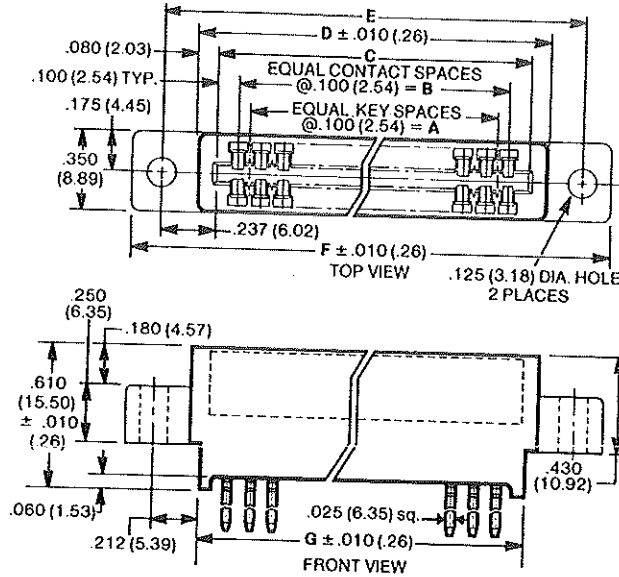


Double Readout



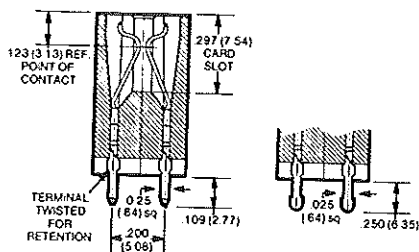
Insulator: Glass fiber filled diallyl phthalate per MIL-M-14 Type SDG-F.
Contact style: Bifurcated cantilever.
Contact material: Alloy 688 high tensile brass.
Contact plating: Selectively gold plated in the contacting area, and minimum gold on the remainder of the contact.

Termination: Solder tab, dip solder, or wire wrap terminals. .200" (5.08 mm) between row spacing.
Electrical ratings: 600 volts D.C. at sea level. 3 amps.
Polarizing key: Between contact type.
 Part no. 50-PK-3 Order separately.
Card guide: Part no. 50-GP1. Order separately.
UL recognized



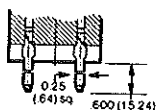
Contact Positions	Dimensions													
	A		B		C		D		E*		F*		G	
	In.	MM	In.	MM	In.	MM	In.	MM	In.	MM	In.	MM	In.	MM
15	1.300	33.02	1.400	35.56	1.600	40.64	1.760	44.70	2.075	52.71	2.335	59.31	1.650	41.91
22	2.000	50.80	2.100	53.34	2.300	58.42	2.460	62.48	2.775	70.49	3.035	77.09	2.350	59.69
36	3.400	86.36	3.500	88.90	3.700	93.98	3.860	98.04	4.175	106.05	4.435	112.85	3.750	95.25
40	3.800	96.50	3.900	99.06	4.100	104.14	4.260	108.20	4.575	116.21	4.835	116.21	4.150	105.41
43	4.100	104.14	4.200	106.68	4.400	111.76	4.560	115.82	4.875	123.83	5.135	130.43	4.450	112.81
50	4.800	121.92	4.900	124.46	5.100	129.54	5.260	133.60	5.575	141.61	5.835	148.21	5.150	130.81

*Does not apply to dip solder terminal insulators



Dip Solder

Solder Tab



Wire Wrap

50-XXC-XX Series	Contact Positions	Distributor Part Number		
		Wire Wrap †	Solder Tab	Dip Solder**
 Bottom View	15	50-30C-30	50-30C-10	50-30C-20
	22	50-44C-30	50-44C-10	50-44C-20
	36	50-72C-30	50-72C-10	50-72C-20
	40	50-80C-30	50-80C-10	50-80C-20
	43	50-86C-30	50-86C-10	50-86C-20
	50	50-100C-30	50-100C-10	50-100C-20

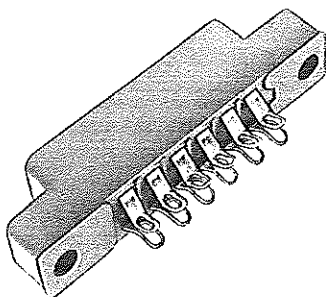
50-XXC-XX-1 Series	Contact Positions	Distributor Part Number		
		Wire Wrap †	Solder Tab	Dip Solder**
 Bottom View	15	50-30C-30-1	50-30C-10-1	50-30C-20-1
	22	50-44C-30-1	50-44C-10-1	50-44C-20-1
	36	50-72C-30-1	50-72C-10-1	50-72C-20-1
	40	50-80C-30-1	50-80C-10-1	50-80C-20-1
	43	50-86C-30-1	50-86C-10-1	50-86C-20-1
	50	50-100C-30-1	50-100C-10-1	50-100C-20-1

**Without mounting ears. †T.M. Gardner Denver

Card Extender Edge Connector

.156" (3.962) Center Spacing
For 1/16" (1.588) Double Sided
Boards

Double Readout



For inter-connecting two or more .156" (3.962 mm) contact center 1/16" (1.588 mm) printed circuit boards.

Insulator: Glass fiber filled diallyl phthalate per MIL-M-14 Type SDG-F.

Contact style: Bifurcated bellows.

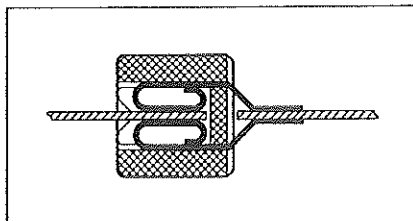
Contact material: Beryllium copper.

Contact plating: Gold.

Termination: Solder eyelets.

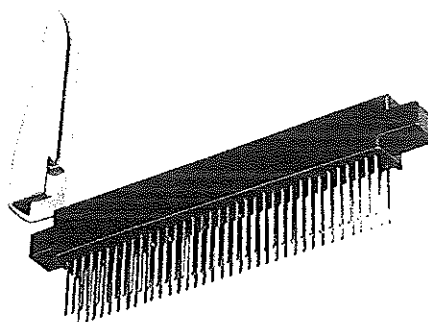
Electrical ratings: 830 volts AC RMS at sea level. 5 amps.

Contact Position	Distributor No.
6	50-12S-30
10	50-20S-30
12	50-24S-30
15	50-30S-30
18	50-36S-30
22	50-44S-30
25	50-50S-30



Printed Circuit Edge Connector Accessories

Card Guide for .100" (2.54mm)
and .156" (3.962mm) Contact
Center Edge Connectors (Except
Float Mounting) for 1/16"
(3.962mm) Boards



Attaches to mounting ears. Guides printed circuit board into connector.

Material: General purpose polypropylene. Not furnished with connector. Order separately.

Green—Part No. 50-GP-1

Blue—Part No. 50-GP-1B

Polarizing Keys—in Contact and
Between Types



Between Contact
50-PK-2
50-PK-2M



In-Contact
50-PK-1
50-PK-4



Between Contact
50-PK-3

Dist. No.	Description	Material
50-PK	In-contact type	Celulose acetate sheet
50-PK-1	In-contact type	Glass fiber-filled diallyl phthalate. Type SDG-F per MIL-M-14
50-PK-2	Between contact type	Medium glass cloth epoxy laminate. N.E.M.A. Grade G-11
50-PK-2M	Between contact type	30% glass-filled polyamide to MIL-C-21097/21. Types A and AD
50-PK-3	Between contact type	30% glass-filled nylon
50-PK-4	In-contact type	Thermoplastic polyester 94V-0

Note: Polarizing keys are not furnished with connectors and must be ordered separately.