

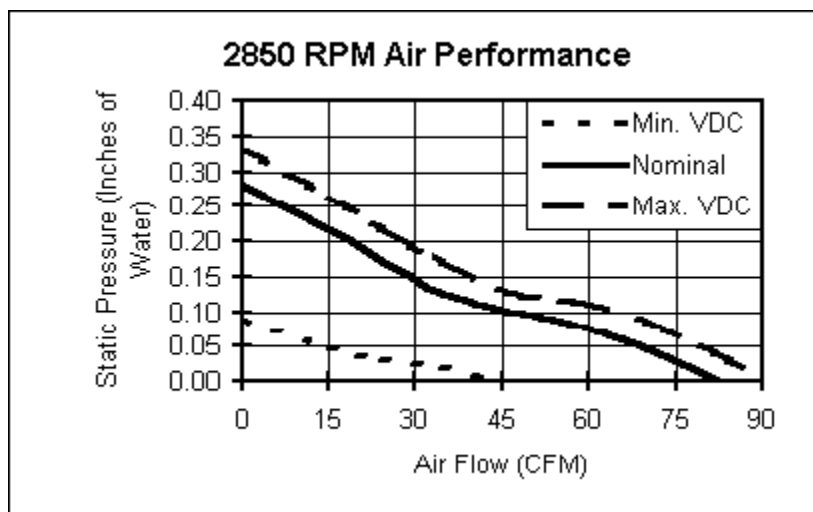
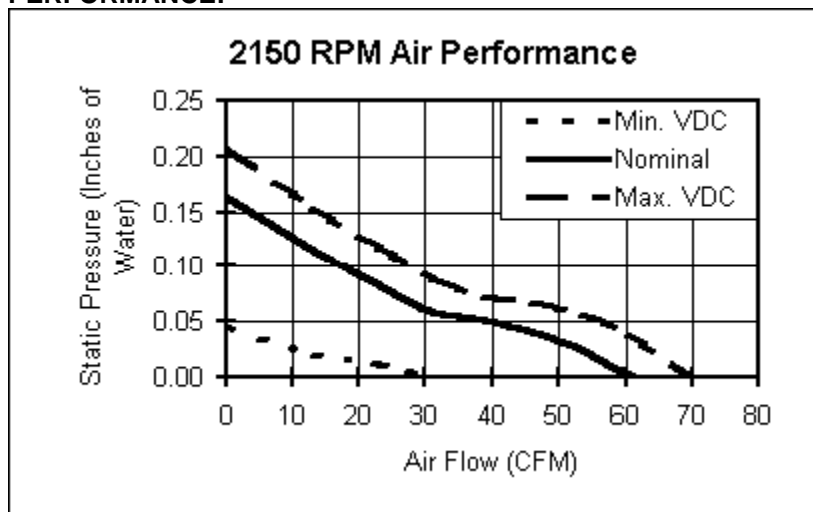
Muffin® DC

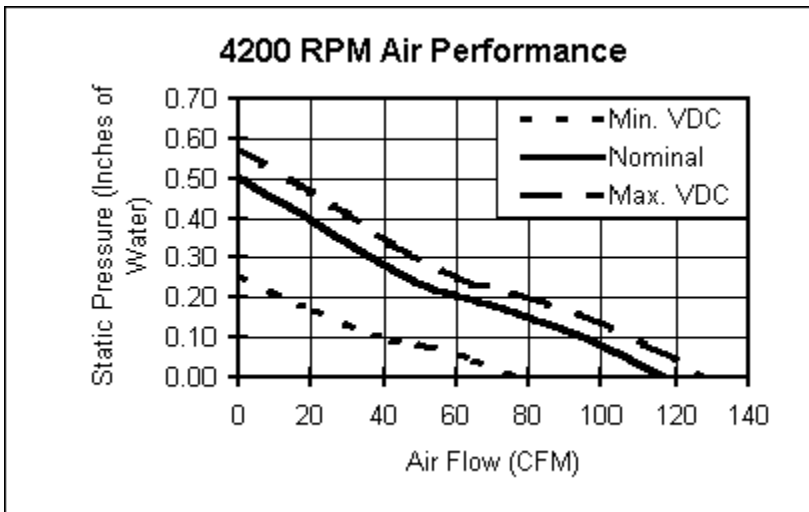
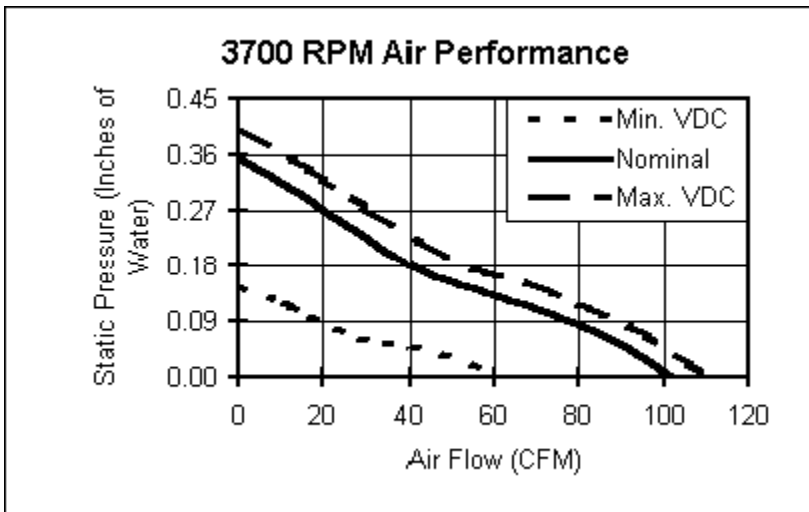
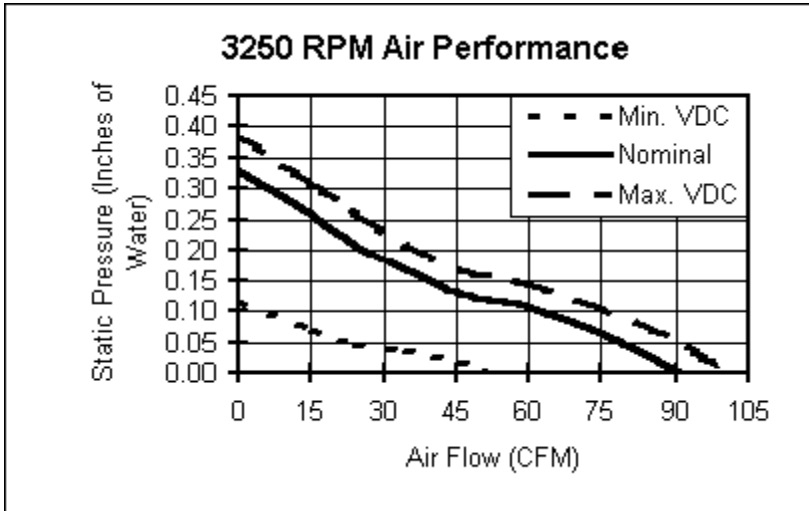
Brushless DC Tubeaxial Fan FEATURES:

- Size: 4.73" sq. x 1.26" deep (120mm x 32mm)
- Air Flow: 58 to 102 CFM
- Voltage: 5, 12, 24, & 48 VDC
- Operating Temperature Range: -10°C to +70°C
- Storage Temperature Range: -40°C to +85°C
- Ball or Sleeve Bearing
- 12" Leadwires, 22 AWG, UL1061
- Weight: 8.5 oz (.24 Kg)



PERFORMANCE:





SPECIFICATIONS:

Model No.	Part No.	VDC	Watts	Running Current (Amps)	Locked Rotor Current (Amps)	RPM	CFM	dBa	Features
MC05E3	030834	5	1.8	0.350	1.000	2150	58	40	1, 4
MC05F3	030837	5	1.8	0.350	1.000	2150	58	40	1, 3
MC05G3	030833	5	3.8	0.750	2.000	2850	80	42	1, 4
MC05H3	030836	5	3.8	0.750	2.000	2850	80	42	1, 3
MC05C3	030835	5	3.8	0.750	2.925	3250	91	46	1, 3
MC05C7	031333	5	3.8	0.750	2.925	3250	91	46	1, 3, 5
MC05J3	030832	5	5.0	1.000	3.550	3250	91	46	1, 4
MC05J7	031261	5	5.0	1.000	3.550	3250	91	46	1, 4, 5
MC12E3	032140	12	2.2	0.180	0.485	2150	58	40	1, 4
MC12F3	030578	12	2.2	0.180	0.485	2150	58	40	1, 3
MC12F7	030883	12	2.2	0.180	0.485	2150	58	40	1, 3, 5
MC12G3	032141	12	4.0	0.330	0.890	2850	80	42	1, 4
MC12G7	030814	12	4.0	0.330	0.890	2850	80	42	1, 4, 5
MC12H3	030576	12	4.0	0.330	0.890	2850	80	42	1, 3
MC12H7	031710	12	4.0	0.330	0.890	2850	80	42	1, 3, 5
MC12C3	030574	12	6.6	0.550	1.250	3250	91	46	1, 3
MC12J3	032167	12	6.6	0.550	1.250	3250	91	46	1, 4
MC12J7	030706	12	6.6	0.550	1.250	3250	91	46	1, 4, 5
MC12A3	032207	12	7.9	0.660	1.750	3700	102	48	1, 4
MC12A7	032228	12	7.9	0.660	1.750	3700	102	48	1, 4, 5
MC12B3	032489	12	7.9	0.660	1.750	3700	102	48	1, 3
MC12B7	030598	12	7.9	0.660	1.750	3700	102	48	1, 3, 5
MC24E3	032142	24	2.4	0.100	0.260	2150	58	40	1, 4
MC24E7	032483	24	2.4	0.100	0.260	2150	58	40	1, 4, 5
MC24F3	030579	24	2.4	0.100	0.260	2150	58	40	1, 3
MC24G3	032143	24	4.8	0.200	0.500	2850	80	42	1, 4
MC24G7	032465	24	4.8	0.200	0.500	2850	80	42	1, 4, 5
MC24H3	030577	24	4.8	0.200	0.500	2850	80	42	1, 3
MC24C3	030575	24	5.5	0.230	0.600	3250	91	46	1, 3
MC24J3	032168	24	5.5	0.230	0.600	3250	91	46	1, 4
MC24J7	030698	24	5.5	0.230	0.600	3250	91	46	1, 4, 5
MC24A3	032208	24	6.7	0.280	0.865	3700	102	48	1, 4
MC24A7	032244	24	6.7	0.280	0.865	3700	102	48	1, 4, 5
MC24B3	030572	24	5.5	0.230	0.830	3700	102	48	1, 3
MC24B7	030599	24	5.5	0.230	0.830	3700	102	48	1, 3, 5
MC24K3	031618	24	10.6	0.440	1.500	4200			1, 3
MC24K7	031822	24	10.6	0.440	1.500	4200			1, 3, 5
MC48E3V	032423	48	4.8	0.100	0.250	2150	58	40	1, 4
MC48F3V	030597	48	4.8	0.100	0.250	2150	58	40	1, 3
MC48C3V	030591	48	7.7	0.160	0.300	3250	91	46	1, 3
MC48J3V	032417	48	7.7	0.160	0.300	3250	91	46	1, 4
MC48A3	032242	48	8.4	0.180	0.450	3700	102	48	1, 4
MC48A7	032467	48	8.4	0.180	0.450	3700	102	48	1, 4, 5
MC48B3	030573	48	8.4	0.180	0.450	3700	102	48	1, 3
MC48B7	030821	48	8.4	0.180	0.450	3700	102	48	1, 3, 5
MC48G3V	032420	48	7.2	0.150	0.300	3050		42	1, 4
MC48H3V	030594	48	7.2	0.150	0.300	3050		42	1, 3

Click here to view diagram - [MuffinDC.gif](#) (74K)

FEATURES:

1. Leadwires
2. Terminals
3. Ball Bearings
4. Sleeve Bearings
5. Tachometer Output
6. Thermal Speed Control
7. Programmable Speed Control
8. Fan Performance Sensor

MOTOR:

- Brushless Electronic Commutation Provided By Dependable Solid State Circuitry
- Ball Bearings or Sleeve Bearings
- 100% Dielectric Tested
- Electronic Locked Rotor Protection (PTC) or Impedance Protected
- Polarity Protectd

CONSTRUCTION:

- Venturi - Plastic, Black, UL94V-0
- Propeller - Polypropylene, Black, UL94V-0

LIFE EXPECTANCY:

- L10 Data - 78,000 hrs, @ 40°C

EMI:

- These products have been tested and complies with FCC Part 15 Class B of:

EN55022 - 1994 Class B Conducted Emissions.

EN55022 - 1995 Class B Radiated Emissions.

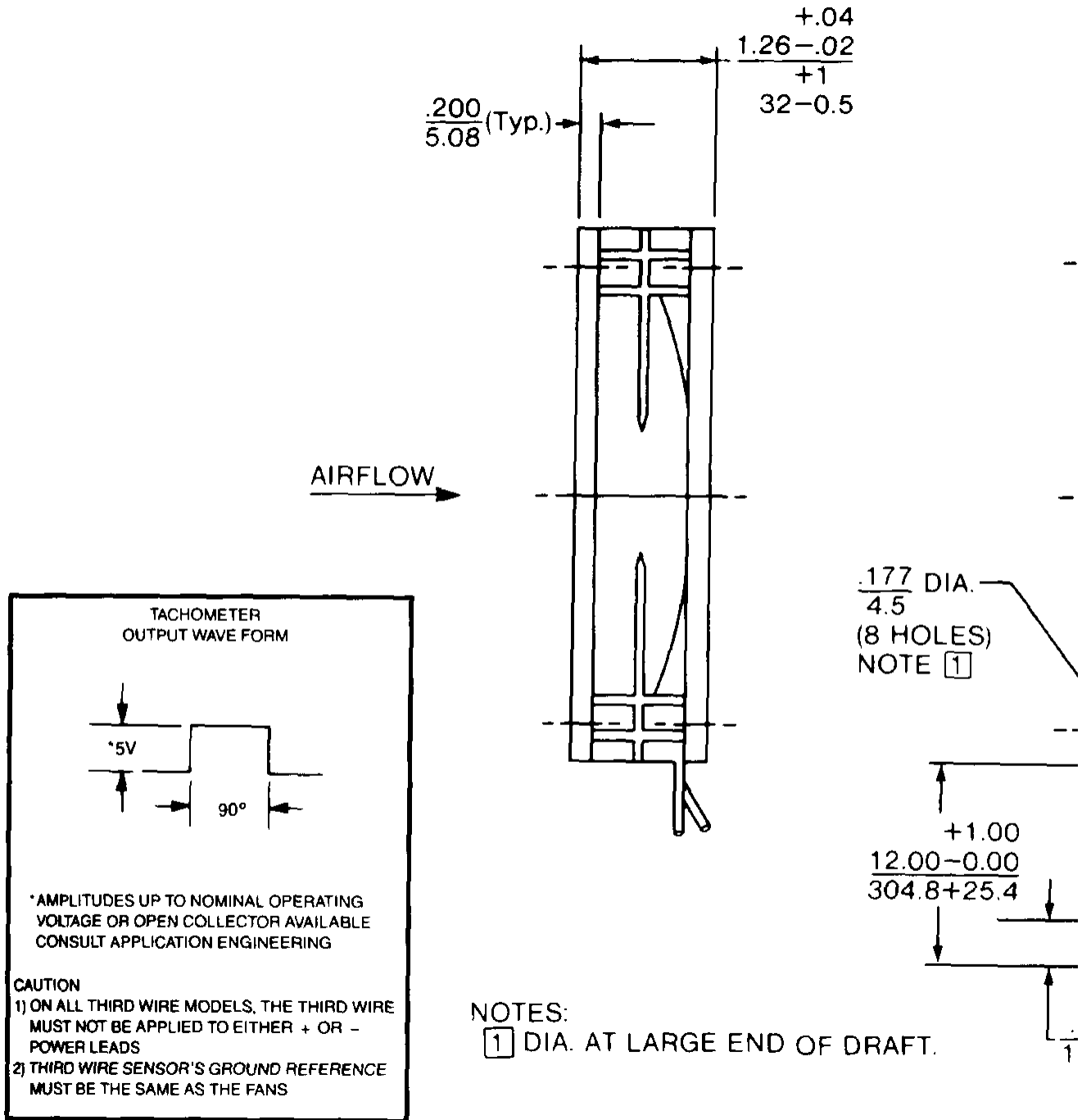
OPTIONS:

- Tachometer Output - square wave output equal to 2 pulses per revolution
- Thermal Speed Control (TPV)
- Programmable Speed Control (TPV)
- Fan Performance Sensors (FPS)
- Customized Harness Assemblies
- Standard & Metric Thread Inserts

 [Back to DC Axial Fans Menu](#)

[Home](#) | [Products](#) | [Competitor Cross-Reference Search](#) | [Product Data Sheet](#)
[Engineering Notes](#) | [Stock Check / Order](#) | [About Us](#) | [What's New](#) | [Contact Us](#)

Muffin[®] DC



[Back to Muffin DC Details](#)

[Back to DC Fans Menu](#)