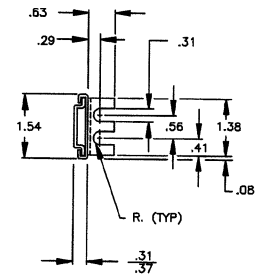
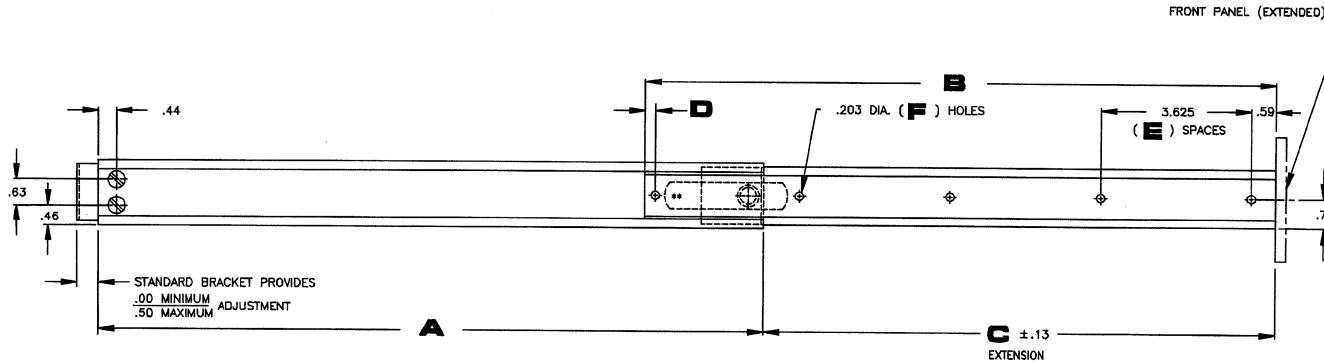
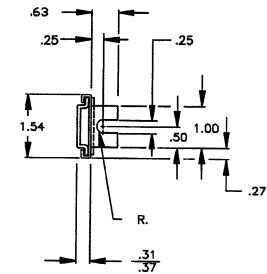
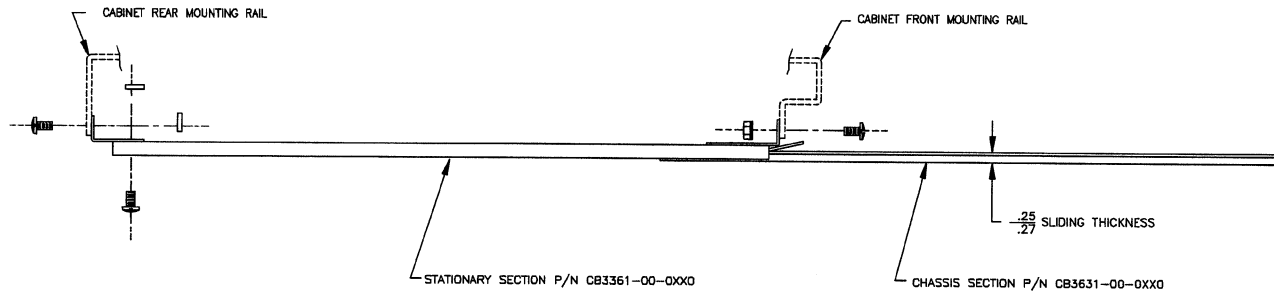


# Model C-874

## Two Section Spacesaving Slide (Non-Pivoting) Available In Stainless Steel



CATALOGUE NO. C-874-RC



CATALOGUE NO. C-874

# Model C-874

**Two Section Spacesaving Slide (Non-Pivoting)**  
**Available In Stainless Steel**

## Model C-874 Dimensions & Load Capacities

CATALOG NUMBER	A	B	C	D	E	F	LOAD CAPACITY
C-874-10	10.00	9.25	7.00	NONE	1	2	95 LBS.
C-874-12	12.00	11.25	9.00	NONE	2	3	95 LBS.
C-874-14	14.00	13.25	10.50	NONE	2	3	90 LBS.
C-874-16	16.00	15.25	12.00	0.25	2	4	90 LBS.
C-874-18	18.00	17.25	13.50	0.25	3	5	90 LBS.
C-874-20	20.00	19.25	15.00	0.25	3	5	85 LBS.
C-874-22	22.00	21.25	16.50	0.25	4	6	85 LBS.
C-874-24	24.00	23.25	18.00	0.25	4	6	85 LBS.
C-874-26	26.00	25.25	19.50	0.25	4	6	80 LBS.
C-874-28	28.00	27.25	21.00	0.25	5	7	80 LBS.
C-874-30	30.00	29.25	22.50	0.25	5	7	80 LBS.

All dimensions in inches unless stated otherwise

### Special Option:

Stationary sections (A dim.) may be mixed and matched with shorter chassis sections (B dim.). Extension length (C dim.) always corresponds to the B dimension.

Example: A 30" stationary (cabinet) section, mixed with a 13.25" chassis section, will provide a 10.50" extension.

## Notes

1. Right hand and left hand slide are same.
2. Finish: All Standard Slides are coated with Poxylube<sup>®</sup> dry film lubricant.
3. All standard slides are designed to lock in the extended position.
4. Automatic release is available if lock-out is not desirable.
5. Standard hardware packages include all hardware necessary to mount your Chassis Trak<sup>®</sup> slides:
  - C-874
    - Rear mounting brackets (B-217)
    - Bar nuts (CA8056-01-0016)
    - #10-32 X .38 B.H.M.S.
    - #10-32 KEPS nuts
  - C-874-RC
    - Rear mounting bracket (B-161)
    - Bar nuts (CA8056-01-0013)
    - #10-32 X .38 B.H.M.S.
    - #10-32 KEPS<sup>®</sup> nuts
6. All sliding members of the standard slide are made from cold rolled steel. This model is also available in stainless steel.
7. All Chassis Trak<sup>®</sup> solid bearing slides are supplied with a quick disconnect feature. This permits the entire chassis to be removed easily and replaced.
8. Optional mounting patterns, slide lengths and extensions are available.
9. For optional mounting brackets, see pages 70-71.



For Sales Service, Order Entry and Expediting  
**(317) 897-7009**

For Engineering and/or Technical Assistance  
**(317) 897-7010**

**General Devices Co., Inc. 317-897-7000 www.generaldevices.com sales@generaldevices.com**